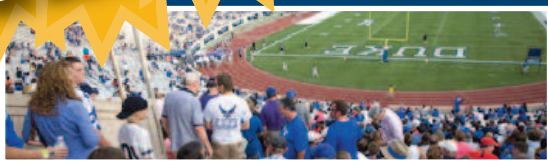


Duke Employee Kick-Off Celebration

September 4, 2010 • Employee Fan Zone opens at 4 p.m. Game starts at 7 p.m.

Fireworks
at halftime!



Family, Football and Fun

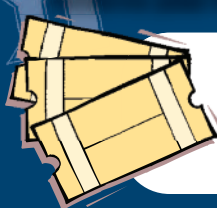


Bring your family for a Labor Day celebration to kick off Duke Football's 2010 season.

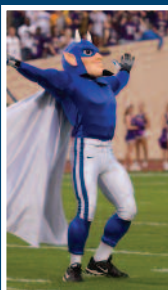
Countdown to Kick Off:

- 4 p.m. Employee Fan Zone opens on K-ville Quad
- ❖ Catered meal with indoor and tent seating (must have DukeCard ID)
 - ❖ Inflatable games (football obstacle course and bungee run)
 - ❖ Face painting
 - ❖ Raffle for airline tickets, football jerseys, autographed footballs
 - ❖ Concessions/merchandise for sale
- 4:30 p.m. Duke Football Team "Blue Devil Alley" Walk
- 5:30 p.m. All gates of Wallace Wade Stadium open
- 6 p.m. Duke University Marching Band pep rally
- 6:30 p.m. Employee Fan Zone closes
- 7 p.m. Duke vs. Elon University
- ❖ Fireworks at halftime

Reserve your **FREE** tickets today at www.GoDuke.com/employee



Reserve your free tickets to the pre-game event and football game by visiting www.goduke.com/employee. If you do not have online access, call 681-8738 to reserve your tickets. Tickets are limited to 4 per employee. DukeCard ID required to pick up tickets on game day.



"I want to thank the thousands of employees and their families who support Duke football with their excitement and energy. You are part of our team and our success."

— David Cutcliffe,
Duke Head
Football Coach

www.GoDuke.com/employee

Sponsored by Duke Athletics and Human Resources

Free parking in designated areas with valid 2010 Duke Parking Permit.