

SARAH P. DUKE
GARDENS

2011 annual report

STATEMENT of OPERATIONS

July 2010-June 2011

REVENUE

Earned Income

Facility Rentals.....	\$229,920
Endowment Income	437,861
Programs & Special Events.....	107,045

Total Earned Income: \$774,826

Contributed Income

Duke University Allocation	\$966,861
Other University Support	327,859
Annual Fund.....	379,180
Foundations.....	172,671
Other Program Support.....	132,000
Released from Reserves.....	28,603

..... **\$2,007,174**

Total Revenue: \$2,782,000

EXPENSE

Salaries & Fringe Benefits	\$1,497,244
Horticultural Operations	497,267
Programs and Special Events	87,117
Marketing and PR	41,576
Development.....	86,832
Administration.....	244,105
Occupancy	327,859

Total Expense: \$2,782,000

FUNDRAISING

Current Operations (unrestricted).....	\$478,520
Capital projects (temporarily Restricted).....	755,307
Endowment (permanently Restricted).....	403,677

Total: \$1,637,504



Letter from the Executive Director	4
In the Gardens	6
Gardens Outreach	18
Friends of Duke Gardens	28
Our Staff	42
Board of Advisors	44

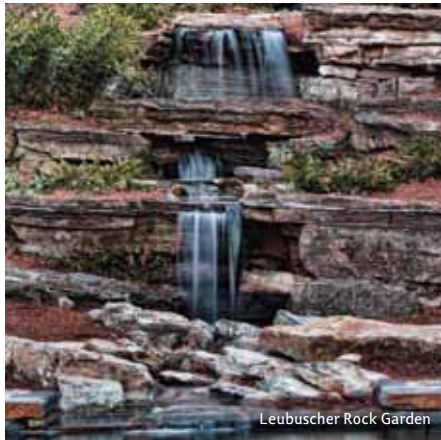


Weeping bald cypress
(*Taxodium disticum* 'Cascade Falls')

294

JUSTIN BROWER
BOXWOODS

in the Page-Rollins
White Garden



Leubuscher Rock Garden



Garden phlox (*Phlox paniculata* 'David') & globe thistle (*Echinops sphaerocephalus* 'Arctic Glow')

FROM THE EXECUTIVE DIRECTOR

What an absolutely outstanding year we've had at Sarah P. Duke Gardens. In a period of intensive project implementation, we completed the new Frances P. Rollins Overlook, finished a two-year storm water management project, rebuilt the Fish Pool and combined all the water features on the Terraces into one recirculating system. We also completed the East Meets West Garden honoring the Fowler family, rebuilt and replanted the Page-Rollins White Garden and contracted to build the long-awaited Charlotte Brody Discovery Garden, to be completed in 2012.

As if that were not enough, we relocated the Roney Fountain, given to Trinity College in 1901 by Washington Duke's sister-in-law Anne Roney, from East Campus to the center of the renovated and renamed Mary Duke Biddle Rose Garden. Images of many of these exciting projects are to be found throughout this annual report. Thank you all who played a role in bringing these new features to life.

Our education and public programs continue to grow in scope and depth, with record numbers of participants. Our outreach to local schools is growing and our volunteer program began a year-long celebration of its 20th anniversary. Bringing arts into the Gardens, we welcomed the American Dance Festival and Paperhand Puppet Intervention, and Duke Performances returned for another series of *Music in the Gardens* summer concerts.

It is almost incomprehensible that the extraordinary beauty displayed here is created and nurtured by a relatively small but profoundly talented staff, supplemented with the devoted efforts of our scores of dedicated volunteers. Those of you who are able to visit frequently know full well what they do. Those of you who may not have visited in a while, I encourage you to do so. This place amazes visitors from near and far on a daily basis, and with the generous support of Duke University and the Friends of Duke Gardens, it just keeps getting better. Thank you.



Sincerely,

William M. LeFevre
Executive Director



ANNABEL GARRETT

Volunteer

I originate from County Durham, England. My family were hill farmers, and I suspect my love of the countryside and plants was instinctive. At school, when I was nine, I won the award for making the biggest collection of pressed wildflowers. My teacher, Mrs. Bly, emigrated to Canada and took my flower collection with her; she wanted to show British wildflowers to Canadian children. I often wonder where my collection is today. Did it survive? I felt cheated when I was told that my most beautiful specimen, a huge, purple rhododendron, could not be included because it was not a wildflower, even though it had been growing in the wild. It was a very early introduction to invasive exotics!

During my 20 years as a plant research scientist, I developed a passion for gardening and never lost my love of the wild regions of Northern England. We now live in North Carolina. Although this Durham isn't remotely like my Durham in England, through the Blomquist Garden of Native Plants at Duke Gardens, I have been able to rekindle the joy and excitement of discovering a new environment just as I had done as a child.



15,000
BULBS

planted in the Terrace
Gardens each season

...SHOWN ABOVE.
Blanket flower
(*Gaillardia X grandiflora*).
OPPOSITE: Terrace
Gardens as seen
from the Frances P.
Rollins Overlook.

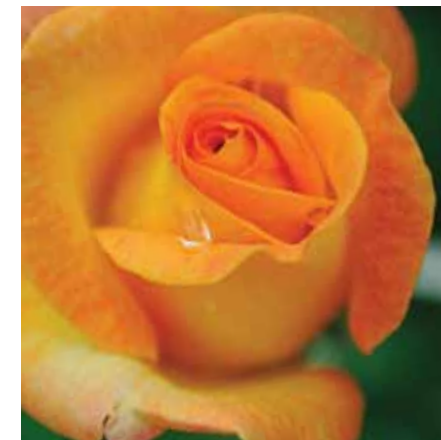
After a year spent largely at the drawing board, fiscal year 2011 was spent enacting and completing many ambitious and dramatic changes that will improve the infrastructure and visual appeal of Duke Gardens.

Frances P. Rollins Overlook

The new Frances P. Rollins Overlook, a gift from Frances P. Rollins (WC'58), has given visitors to the Gardens a new perspective of the dramatic Terrace Gardens – that is, a new old look, given that the overlook location is just inside the Gardens' original entrance and was the vantage point from which most visitors first saw the Terraces at that time.

The overlook floor is flagstone that once edged the beds in the Terraces. Its walls are cut from Duke stone and provide additional seating for the gatherings we expect will be popular there. We also rerouted some adjacent paths, enhancing the impact of the Doris Duke Camellia Collection. The Overlook dedication ceremony in May included Rollins family members, Duke President Richard H. Brodhead, Mary Semans and others. Many visitors have commented on the spectacular view from the overlook, it was the site of our 2011 National Public Gardens Day ceremony, and already at least one future bride has vowed to hold her wedding there.

IN THE
GARDENS



Fish Pool and Rock Garden

The Overlook sits elegantly over the restored Fish Pool, the Duke stone floor of which is visible with crystal clarity, thanks to a new storm water filtration system.

The Fish Pool has been restocked with Japanese koi fish and goldfish, the former donated by a generous local resident and the latter released by scores of excited children at the Great Fish Release, a highlight of spring Family Fun Day in May.

The newly restored Leibuscher Rock Garden and stunning waterfall between the Fish Pool and Overlook can now be easily enjoyed by a wider audience, thanks to new safety handrails.

Roney Fountain

The historic, painstakingly restored Roney Fountain is now in its new home at the center of the expanded Mary Duke Biddle Rose Garden. It is a favored attraction among visitors, who inevitably pose for photos in front of it. It looks so fitting there that, as Duke President Richard H. Brodhead remarked at its dedication in May, visitors will likely presume that it has been there since the Rose Garden was first built. Duke alumni won't forget its past, though. Donated by Anne Roney, sister-in-law of Washington Duke, it was installed on East Campus in 1901. But it had fallen into disrepair over the decades. This restoration by Robinson Iron of Alabama, using the original molds from J.L. Mott Iron Works of

...SHOWN ABOVE (L-R), Bill LeFevre with the Fowler family at dedication of the East Meets West Garden; Virtue Peace Pond; descendants of the Roney-Duke family in front of the Roney Fountain; hybrid tea rose (*Rosa* 'Rio Samba').

New York City, brings it back to its former glory and in a far more visible location. LAMBERT Architecture + Interiors of Winston-Salem oversaw the restoration project, including the fountain plaza, with its traditional fish-scale-patterned pavers.

The Roney Fountain restoration was made possible by a bequest from the late Dr. J. Robert Teabeaut II (T'45, M.D.'47) in honor of Mary D.B.T. Semans. The Mary Duke Biddle Foundation provided additional funding for the project, as did the Thomas S. Kenan Foundation, the William R. Kenan Jr. Charitable Trust and other donors.

...visitors will likely presume that the fountain has been there since the Rose Garden was first built. Duke alumni won't forget its past, though.

At fiscal year's end, phase II of the project was beginning, which includes a new ADA-accessible path, a rose arbor, wood and stone benches in the arbor and adjoining the Rose Garden, an elegant new entry staircase, container plants in the plaza, and 'Akebono' cherry trees in the entry allée. It will also include new no-spray roses in the Mary Duke Biddle Rose Garden, complemented by herbs, perennials and ornamental grasses. The Rose Garden improvements are a gift from the Mary Duke Biddle Foundation. Sam Reynolds, of Reynolds & Jewell Landscape Architecture in Raleigh, developed the design for the entry allée improvements.

Page-Rollins White Garden

The redesigned Page-Rollins White Garden – donated by Frances Page Rollins, who was inspired by the white garden at Sissinghurst Castle in England – is blossoming beautifully and has already been the site of many dazzling spring weddings. A new stone bench in honor of Frances Rollins' late husband, E.T. Rollins Jr., provides an enchanting seating nook. Stone columns beckon visitors to explore the interconnecting paths. A dramatic new Gothic Pavilion is its crowning glory. A water feature, along with furnishings and containers, will complement the Pavilion.

This garden will feature an ever-changing display of white blooming annuals, perennials, vines, shrubs and trees, blended with dynamic foliage. Garden curator Jason Holmes, along with director of horticulture Bobby Mottern, took a research trip to England in spring to glean design and planting ideas for the new garden. Judging from their photo presentations upon their return, we have many delightful surprises in store.

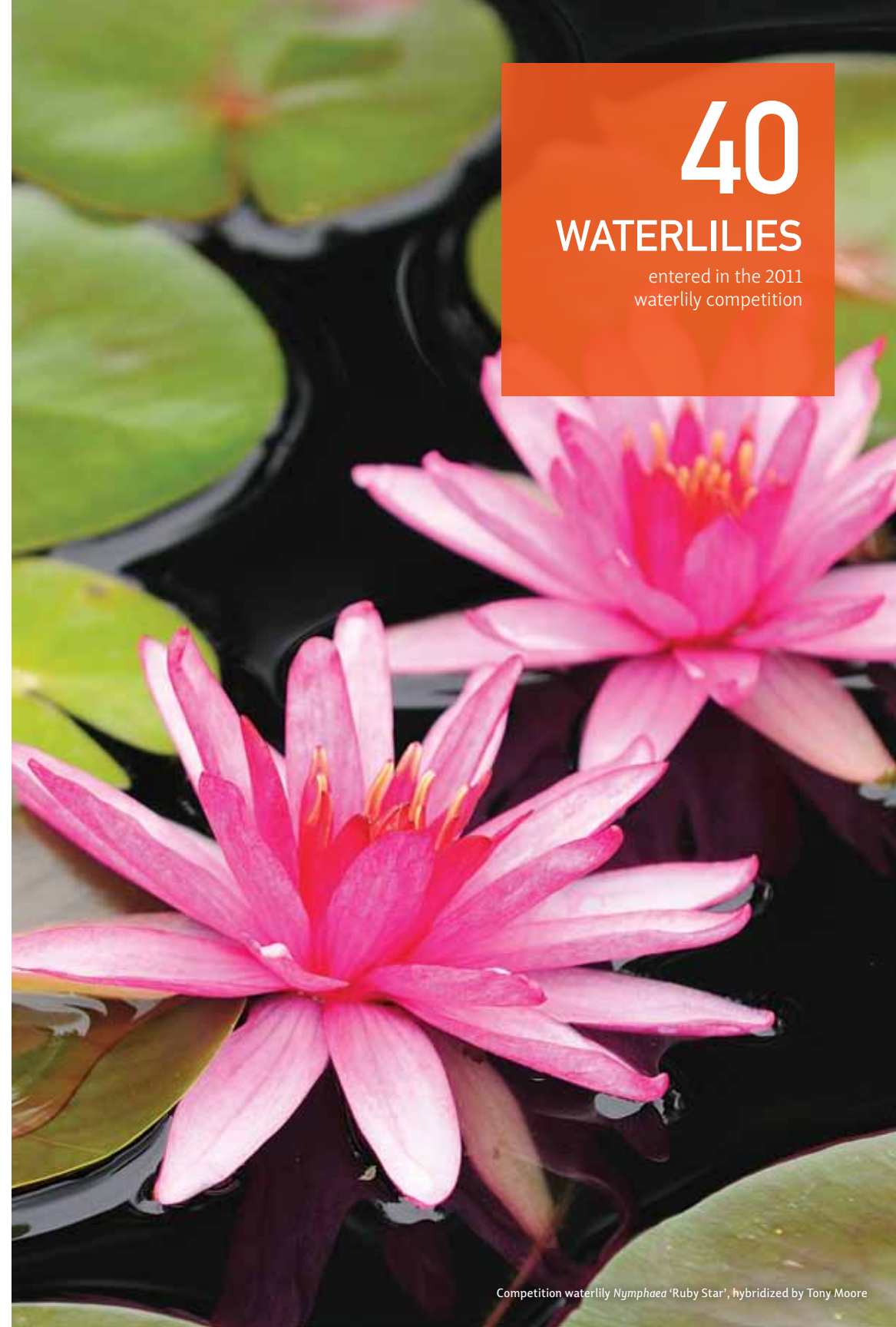
The Virtue Peace Pond adjoining the White Garden was again the site of the International Waterlily and Water Gardening Society's annual New Waterlily Competition. The hardy waterlily 'Wanvisa' took the top prize in 2010. Hybridized by N. Nopchai Chansilpa of Thailand, 'Wanvisa' is the first hardy waterlily to receive this honor, which typically goes to a tropical hybrid.

The Virtue Peace Pond adjoining the White Garden was again the site of the International Waterlily and Water Gardening Society's annual New Waterlily Competition.

Another unique entry in the competition was 'Siam Pink', hybridized by crossing a hardy waterlily with a tropical, a feat once thought impossible. Known as inter-subgeneric hybrids, these creations will likely become more common in subsequent competitions. The 2011 competition drew a record-setting 40 competitors. Visitors learned about hybridization, plant trials and cultivation techniques in seasonal Waterlily Walks offered in our adult education program.

40
WATERLILIES

entered in the 2011
waterlily competition





Charlotte Brody Discovery Garden

The Charlotte Brody Discovery Garden is taking shape, after much planning with architect Ellen Cassilly and landscape architect Jesse Turner. Scheduled to be completed in spring 2012, the site will feature an organic vegetable garden, a food forest for people and wildlife, rain gardens and a storytelling circle. It will also include the Burpee Learning Center, a reconstructed tobacco barn created from two barns donated by former associate director Larry Daniel and funded by a generous grant from the Burpee Foundation. The garden received major funding from the family of Charlotte Brody. It will help give children and families hands-on lessons about the Earth and where their food comes from. The Honey Patch community garden, tended by Duke's Farmhand Club, will be relocated to the Discovery Garden, as will the beehives.

East/West Garden Walk

The East/West Garden Walk has become an attractive addition to the Doris Duke Center Gardens, leading visitors from the Piva North Terrace to the W.L. Culberson Asiatic Arboretum. Perennial planting continued through spring, and the garden was dedicated during the spring Advisory Board meeting, in a ceremony honoring the generosity of the Fowler family, who made the garden possible.

Other enhancements

The **Memorial Garden** continues to fill out, its plantings maturing to create a stunning and serene atmosphere through all four sea-

...SHOWN ABOVE (L-R),
the Blomquist Pavilion:
a tea gathering in the
Japanese Pavilion; the
East Meets West Garden;
the Memorial Garden.

sons. We added four new teak benches this year, allowing visitors to rest and collect their thoughts, surrounded by daffodils, azaleas and other bright flowers.

The path from the **Memorial Gate** to the **Terrace Gardens** was re-routed slightly to decrease the slope and provide an improved visual connection. And we recently added additional rock outcrops and plantings to the lawn in the Piva bed.

In the **W.L. Culberson Asiatic Arboretum**, the Durham-Toyoma Sister Cities Pavilion now has a traditional Japanese waiting shelter, or *machiai*. Designed by architect Derek Jones, the *machiai* enables guests to our popular Japanese Teas in spring and fall to get a more full experience of the age-old tea tradition. If you haven't been to the Pavilion lately, you will be pleased to see how beautifully it's developing, with new paths and plantings in addition to the shelter. The Pavilion received a 2010 Golden Leaf Award in the community properties category from the Durham City-County Appearance Commission and Keep Durham Beautiful.

In the **H.L. Blomquist Garden of Native Plants**, the Edwin F. Steffek Jr. Bridge in the Fern Grotto has been dismantled due to concerns about the structural integrity of the steel beams. A new bridge is being designed as a replacement, with an emphasis on accessibility. The Steve Church Endangered Species Garden is also being redesigned, with new paths and a boardwalk that will create a barrier-free loop for visitors as they experience the world of these disappearing species.

We hope you will visit soon to see these and other enhancements, all made possible by our generous Gardens Friends.



Egyptian star flower (*Pentas lanceolata* 'Graffiti Red')

1,000
PLANT
SPECIES

live in the Blomquist Garden



Tatarian aster (*Aster tataricus* 'Jin-Dai')

Bee on echinacea plant (*Echinacea purpurea*)

65 BUTTERFLY SPECIES

recorded in Duke Gardens



RODGER BELMAN

Choreographer & Instructor

American Dance Festival's The Duke Gardens Project

My grandparents were avid gardeners and had beautifully landscaped yards. They grew everything from azaleas to zinnias. They also had a rose garden, vegetable garden, strawberry mounds and blueberry bushes. They knew the Latin names for everything. I definitely learned an appreciation for gardening and gardens from a very early age.

When I first started thinking about making dance in Duke Gardens, I began to see the Gardens with new eyes, and I was hooked; there's so much inspiration, so much potential here – the perfect muse. Duke Gardens has provided the perfect space in which to make and perform dance. What better backdrop, scenery, lighting and acoustics than those supplied naturally in the gorgeous Duke Gardens?

I see something new every time we go into the Gardens to rehearse, and I see even more in performance when all of the elements come together. I created a solo for one of the dancers that was inspired by the blue heron that I often saw when I visited the Gardens. During the evening performance just before dusk, the heron showed up and circled the dancers overhead and became part of the performance – it was spectacular! I also love having the audience all around us and sometimes in the middle of us, in non-conventional, non-traditional ways.

There's still so much more to explore and discover in the Gardens, and I'm already thinking about the next Duke Gardens Project. This summer I taught for the ADF Henan, in Xinxiang, China, and I directed a garden project there. Now I'm thinking about how to do more and more of this kind of work in gardens all over the world. But I don't imagine there's any place anywhere in the world quite like the Sarah P. Duke Gardens.



...SHOWN AT LEFT & ABOVE, Children release goldfish at the Great Fish Release; campers plant vegetables in the Honey Patch community garden.

217
PROGRAMS
offered in fiscal year 2011

GARDENS OUTREACH

The Education and Public Programs of Sarah P. Duke Gardens serve the community with rich, rigorous and engaging offerings. Our goal is to increase understanding and appreciation of the natural world. Visitors can find classes to join, drop-in science activities and crafts, music and dance performances or films to enjoy and guided tours of the Gardens.

The horticulture staff members lead walking programs, their expertise enabling visitors to use the Gardens as a primary resource for ornamental horticulture information.

School and family programs are serving more children with a refreshed listing of classes. The many talented individuals who volunteer in the Gardens and in our programs bring a wealth of expertise, skill and pure enthusiasm that would be unavailable without them.

Serving Families

Family Fun Day has been a major attraction for parents and children, and our fall and spring Fun Days drew thousands of participants. The Triangle's environmentally conscious puppet troupe Paperhand Puppet Intervention performed a sold-out show during the spring festival, followed by a participatory parade open to the public. And



20
FEET

height of the tallest puppet in
The Paperhand Puppet
Intervention parade



...SHOWN ABOVE (L-R).
Paperhand Puppet
Intervention parade;
Nature Adventures
campers; Duke Law
students volunteer
at the Gardens.

both festivals included nature- and science-based activities such as making “sound sandwiches,” painting with plants, and the Great Fish Release, in which children introduced goldfish to the newly refurbished Fish Pool.

Duke Performances drew big crowds to the Doris Duke Center Gardens with its Music in the Gardens series of independent pop and rock concerts outdoors, as well as classical music concerts inside Kirby Horton Hall. Duke Gardens worked more closely with Duke Performances for the 2011 season, with Duke Performances director Aaron Greenwald making weekly announcements to audiences about Gardens developments, and our development team manning an information table to talk about the benefits of Gardens membership. Many families came early to enjoy picnics before the shows.

American Dance Festival instructor Rodger Belman returned to Duke Gardens in July 2010 to present the second in The Gardens Project series. Belman works with ADF students to create dances that are set in various spots in the Gardens and presented in a free performance for the public.

Our Movies in the Gardens at Twilight 2010 series was also popular. Many families gathered on alternate weeks to watch the quartet of 1980s films: “E.T.: The Extra-Terrestrial”; “Ghost Busters”; “The Goonies”; and “Who Framed Roger Rabbit.”

Serving Adults

Partnerships with local organizations are thriving. The Gardens hosts monthly meetings of the Triangle Orchid Society, the Durham Photography Club, the Durham Beekeepers, the Durham Garden

Forum and the local International Ikebana Chapter. Members of these groups offer us an opportunity to understand their individual interests and expertise, resulting in increased program enrollment, a broader set of potential instructors and a deeper level of service to the community.

Adult participation in programs and volunteering continues to grow, with a 20% increase in program enrollment and the highest level of volunteer activity ever. This year we celebrate, with appreciation, the 20th anniversary of the Gardens’ volunteer program.

Our spring and fall fundraising plant sales drew large crowds, as did the Garden Guild’s Holiday Craft Fair. With friendly advice and encouragement from our horticulturists, many gardeners left the plant sales with large wagons packed with new plants to try in their gardens. We are working on ways to improve the sales’ organization and efficiency while maintaining the fun and informative atmosphere that our supporters love.

Adult participation in programs and volunteering continues to grow, with a 20% increase in program enrollment and the highest level of volunteer activity ever.

Online Outreach

As we prepare for the Gardens’ website redesign this year, we’ve made some interim changes to the existing site to clarify and streamline navigation. Our aim for the new web design is to feature the Gardens’ stunning visuals more prominently and also provide downloadable maps and other information in a more user-friendly and intuitive way.



Meanwhile, our online social networks continue to grow, enabling us to keep people apprised of classes, special events and other news. We're now at more than 4,000 Facebook fans from 19 countries, with 1,700 from the Triangle. We have more than 1,600 Twitter followers. And our videos on youtube.com and Duke on Demand continue to attract many viewers, particularly the plant sale previews featuring our horticulturists talking about certain plants and how to care for them. You can find links to these features on the Gardens' home page, gardens.duke.edu.

Facility Rentals

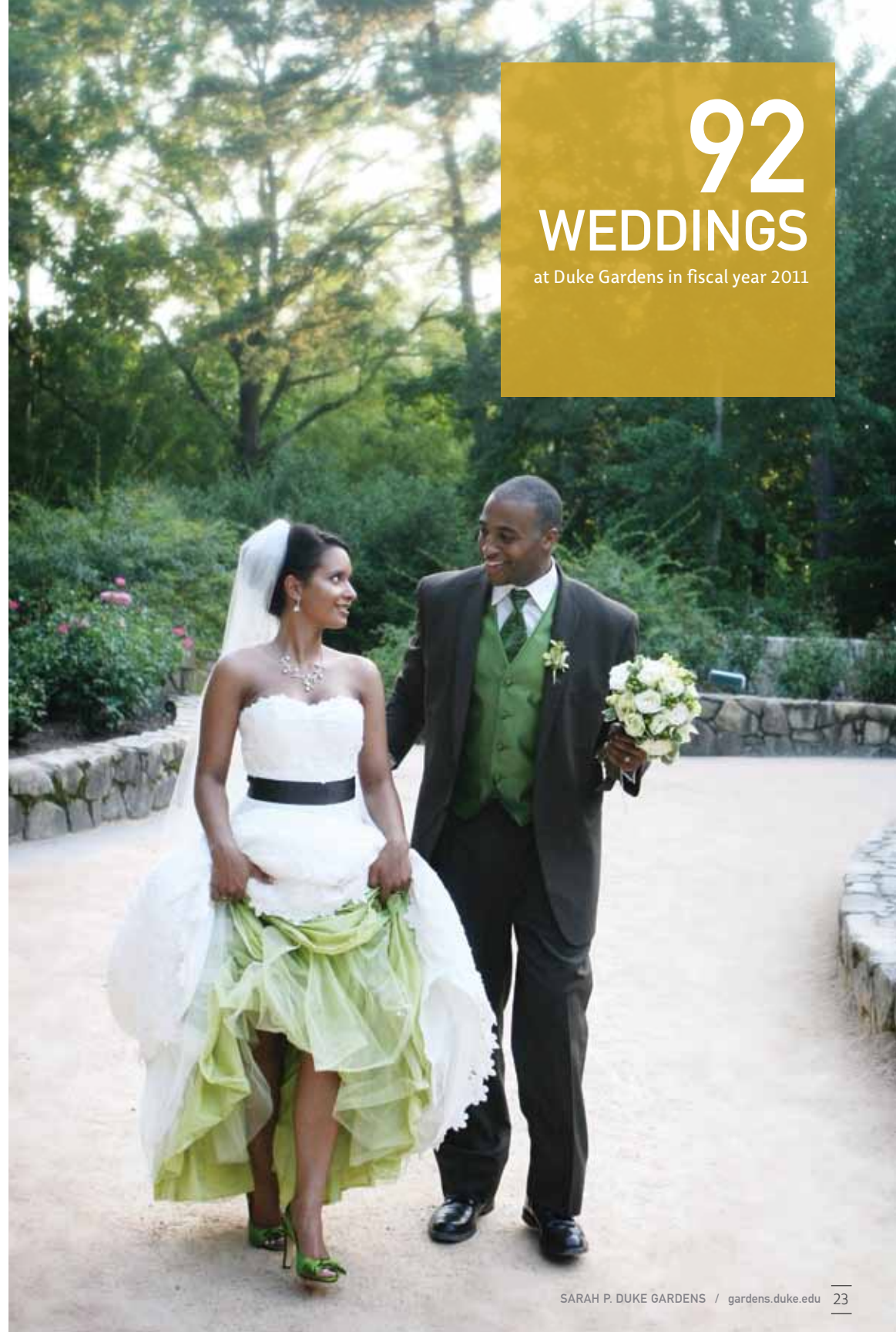
Despite the fragile economy, rentals of the Doris Duke Center and outdoor sites remained on a par with FY2010. The Gardens hosted 192 total events, including 85 university-sponsored gatherings and 92 weddings.

In other highlights, Duke University continues to hold its employee orientations at Duke Gardens twice a month, and the Doris Duke Center hosted many grand fundraisers in the last fiscal year, including the Big Wig Out for Duke Cancer Patient Support Program's Self-Image Program, and Nourish International's Masquerade Ball.

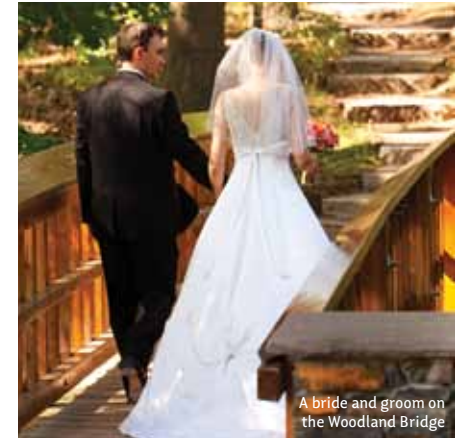
We also made the Doris Duke Center a more desirable venue for caterers this year. We moved all classes and meetings to the newly organized Brenda Brodie Classroom, enabling the adjacent room to be used solely by caterers. We have increased our advertising for rentals, and we continue to look at ways to make the Doris Duke Center a more accommodating location for elegant events.

We hope you will visit soon to see all the exciting developments in the Doris Duke Center and our programs.

...SHOWN ABOVE (L-R). Celebrating on the John Piva Terrace; a child at the Spring Plant Sale. OPPOSITE: A wedding couple in the Mary Duke Biddle Rose Garden.



92
WEDDINGS
at Duke Gardens in fiscal year 2011



A bride and groom on the Woodland Bridge

192 RENTALS

in the Gardens in fiscal year 2011, including concerts, weddings and Duke staff orientations



Shoppers at the Spring Plant Sale

Musicians perform at a wedding in the Page-Rollins White Garden

15,626 HOURS

contributed by Duke Gardens
volunteers in fiscal year 2011



CARY & ANN GRAVATT

Gardens Friends

We were both chemistry graduate students at Duke in the early '60s (Ann, M.A. '64, and Cary, Ph.D '66). We started dating and for lunch almost every day would purchase food from the "Dope Shop" in the Medical School – the snack bar that was right inside the Davison entrance – and walk to the Gardens. Our spot to eat and enjoy the serenity and view was on a rock near what is now the Rollins Overlook. We gradually began to think of this as "our rock."

After we left Duke, whenever we returned to the Triangle area to visit friends and the school, we would always return to the Gardens. After 36 years in the Washington, DC area, Cary was offered a position as adjunct professor in the Nicholas School of the Environment and we moved to Durham in 2004. Now that we are again closer, we love visiting the Gardens in all seasons even though we're not skilled gardeners!

However, over the years, the area we used to frequent on the campus side of the Fish Pond had become overgrown with bushes and other plants. With the recent landscape improvements, the rock has been again exposed and it is in wonderful view of the Terraces. "Our rock," as a component of the restored Rollins Overlook, is one of the reasons we made the donations to support the work in this area. The entire area is beautiful, an outstanding improvement.

FRIENDS OF DUKE GARDENS

Gifts received: July 2010-June 2011



Mary Duke Biddle Society

\$5000+

Ellen & Rex Adams
 Marcia Angle & Mark Trustin
 Milton Arky
 Mary & Bruce Barron
 Marilyn & Brit Bartter
 Renee Becnel
 James Bonk
 Cynthia & Richard Brodhead
 Brenda & Keith Brodie
 Stacy & H. J. Brody
 Jan & Bill Brown
 Jane & Clarke Church
 Mary Dawson
 Ann & Cary Gravatt
 Thomas Harman
 Anna Ho & Bob Whalen
 Alice & Trig Horton
 Sarah & James Howell
 Chrissy & Joel Huber
 Mary & James Jones
 Nancy & Daniel Katz
 Thomas Kenan III
 Joan Mertens
 Ruth Mary & Horst Meyer
 Amy Moss & Bill Brown
 Ken Moushegian
 Barbara Newborg
 Mary Newman
 Kathy & John Piva
 Kay & Renny Randolph
 Frances Rollins
 Kimberly Purvis & Doug Runte

*deceased

Richard Sauer*
 Diane & Robert Schaaf
 Terri Schrager
 Alice & Karl Sheffield
 Molly Simes
 Lucia & Steven Steinhilber
 Elizabeth & James Surratt
 Teddy and Bob Taylor
 Ethel Weinberg
 Tana Grady-Weliky*
 Faye & Warren Wickersham
 Mollie Williams

Directors Society

\$2,500-\$4,999

Joan Cohen
 Araminta & William Coolidge
 Bob Durden & Anne Durden*
 Gary Gosnell
 Lori & Gregg Ireland
 Jeanne & Kenneth Levy-Church
 Donna Louzides & Jay Venkatesan
 Betty & L.T. Matthews
 Lois Oliver
 John Quackenbush
 Mary Robinson
 Courtney Shives Jr.*
 Kay Stern
 Joseph Vitagliano
 Sara Zaboltny and Matthew Solum

Pergola Society

\$1,000-\$2,499

Anne Micheaux & Onye Akwari
 Margaret Babb
 Margaret Ball & Peter Stace
 Delaina & Al Buehler
 Eric Childs
 Allen S. Church
 Laura Colebank
 Gloria & Jon Couch
 Brenda & Aaron Cowell
 Larry Daniel
 Princess & John Daniel
 Evebell Dunham
 Frances Durden
 Philip Erlenbach
 Betsy & Kurt Euler
 Joan & William Farrell
 Kristine & Brian Finlay
 Beth & Rick Fisher
 Cavett & Barker French
 Elizabeth & Michael Gorman
 Leslie & Allen Gregg
 Susan & Geoffrey Harris
 Bob Hoff
 Jennifer & Robert Horne
 Margaret Howard
 Susan Hudson
 Gail & Robert Jarro
 Sarah Johnson
 Pat & Allen Kelley
 Ann & William Kirkland
 Patricia & John Koskinen

Polly & Bill LeFevre
 Ann Leininger & George Hugh
 Pamela & Curt Livingston
 Sarah Maxwell & Marc Smith
 Mavis Mayer
 Carolyn & William McClatchey
 Kathleen & Aubrey McClendon
 Dolly & John McKenna
 Charlotte & Tom Newby
 Louise Pariser
 Doren & Sheldon Pinnell
 Kate Piva & Kenneth Mitchell
 Josephine Powe & Thomas McGuire
 Lamont Powell
 Mary & Bob Price
 Betty & Robert Richardson
 Virginia & Steven Roark
 Lib & Ralph Rogers
 Ruth Ross
 Cheryl Sanford & Richard Danner
 Nan Schiebel
 Celestea Sharp
 Ashley & Dan Shiff
 Erika & Zachary Smith
 Jean Stallard & John Kelly
 Bertrand Welch
 Corinne & Scott Welsh
 Evelyn Wherrett
 Evelyn & George Wilbanks
 Sterly Wilder
 Amy & Steven Williams
 Patricia Workman
 Shaofeng Yu & Baifei Zeng

...SHOWN ABOVE, Duke President Richard H. Brodhead (left photo) and Mary Semans (center) at the Roney Fountain dedication ceremony. At right, Bill LeFevre, Frances Rollins and Richard Brodhead at the dedication of the Frances P. Rollins Overlook.

Terraces Society

\$250-\$999

Baerbel & Jon Allingham
Elizabeth & Alvin Alsobrook
Cindy & Chuck Anderson
Marilyn Anderson
Taimi & Bob Anderson
Geeta Arora
Leslie & William Bennison
Catherine Biersack
Mary & Raymond Boardman
Patty Bowman
Mary & James Brigham
Susan & Paschal Brooks
Bonnie Bycoff
Doug Bycoff
Lorne Bycoff
Christine & Jim Byerly
Jean & Paul Carr
Margaret & Henry Caughman
Debra Church
Benjamin Clark Jr.
Sue & Tony Clark
Jane Clayton
Sarah & Matt Cloues
John Coleman & Beth Toussaint
Curtis Cost
Carol & Edward Cowell
Kimberly & James Daniel
Douglas DeLong & Lynn Marsh
Valerie & William Duke
Becky & Charlie Dukes
Marianne & David Elebash
Mary & Robert Elkins
Kristine & Howard Finlay
Margaret & Donald Fluke
Sandra & Ruffin Franklin
Sylvia & Ryan Fulton
John Gagliardi III
Elizabeth & Patrick Garrett
Amanda & Nick Gelber
Bradd Gold
Nina Gordon
Annie Gray
Whitney Grumhaus
Gita & Edwin Gulati-Partee
Jeanne Gustafson
Marcia Hagee
Melody & T. R. Hainline
Marie & Sam Hammond
Kathryn & Henry Hargrove
Harry Harkins Jr. & Kenneth Stilwell
Merel & Ernestine Harmel
Jacqueline Harper
Lisa & David Harrington
Erin & Andy Heiskell

Barbara Hiaasen
Eva & Robbin Higby
Ruby Holder
David Hsieh & Priscilla Ching
Amanda & Michael Huttenlocher
Karla Jacobus
Barbara Jacowleff
Lee Johns
Charlotte & M. Ross Johnson
Polly & Ray Jones
Shirley & Robert Kahan
Sally & James Kellogg
Alexandra & John Ketner
Nancy Kimmerle
Nancy & Christopher King
Maggie Kirk
Rebecca & John Kirkland
Jane & Robert Koke
Lee Kolosna
Laura Krister
Leslie & Kevin Kuchinski
Uma Kuruganti
Sherry & Erick Larson
Adele & Scott Laufer
Sara & Richard Leff
Rebecca & Jonathan Levy
Karen & David Logeman
Janice & Joseph Luchetski
Constance & David Lyons
Virginia & John Marino
Nancy Marks
Nan & James Mason
Davia & Jim Mazur
Jennifer Martinez & Bill McArthur
Doris McCoy
Audrey & George McGlaughlin
Will McKee
Judy & Jim McMillin
Lavonne Meads
Mary & Walter Metz
Christopher Meyer & Gary Nicols
Gabe Meyer
Georgina & Jon Meyer
Janet & Robert Molinet
Cynthia & Brendan Moylan
Alice Mumford & Jerry McDaniel
Paul Nesline
Margot & Larry Nicholson
Susan & Michael Nogan
Shirin Odar & Theodore Payne
Beth & Edwin Page
Leslie & Kim Payne
Carolyn & Wade Penny
Martha S. Penny
Ludean Peters
Julia Philyaw
Catherine & Jason Piche

Heidi & Michael Pickens
Elizabeth & Scott Pierpont
Joyce & Jeffrey Porter
Cheryl & Jeff Prather
Lynn & Clayton Pruitt
Merry & Robert Rabb
Chris Reese
Jonathan Rick
Valerie & Cory Rind
Patricia & Thomas Ringe
Sima Robins
Theo Roddy
Lu & Carl Rose
Nell & Bruce Rubidge
Joanne & Steven Samuel
Annette Satterfield
Justin Sawyer
Bernadette Scott
Susan & Barry Shepard
Linda & John Sigmon
Michelle & Daniel Silver
Katy & Erik Simpson
Robert Simpson
Fred Smith & Barbara Strohbehm
Rebecca & Michael Smith
Phyllis & Mel Snyder
William Sprinkel Sr.
Jane & William Spruill
Cecil & James Srodes
Laurie & Colin Starks
Suzanne & Robert Stebbins
Michele & Eric Steinhouse
Kristin & Joseph Stevens
Jo Ann & William Storey
Dorothy & John Swartz
Louise & Banks Talley
Meredith & David Thacker
Leanna & William Thomas
Sandra & Gerard Treanor
Ingrid Han-Yu Tsong
Caroline Vaughan
Annmarie & Thomas Ward
Mary Ward
Ann & Mark Weinstock
Jill & Rick Wenham
Norma & Dick White
Barbara Wolf
Richard Wolfe
Alma Woodyard
Marie Wright
Margaret & James Young

Groundbreakers Society

\$50-\$249

Rachel & Marc Abrams
Sarah & Alfred Adams
Cecilia & Gustavo Alvarez
Barbara Amen
Jean Anderson
Nancy & Banks Anderson
Patricia Anderson
Susan & Holt Anderson
Susan & Mark Andrews
Julie & Robert Anger
Leslie & Jonathan Angier
Maria Del Pilar Antorcha
Michael Arichea & Paul Scamardella
Pat & William Armistead
Amy & Richard Arnesen
James Arnold
Laura & Steve Ash
Grace & Bert Atkinson
Gregory Baecher
Suzanne Bagert
Patricia Bailey
Cookie & Michael Baker
Carol Ballard
Arup Banerjee
Olivia Baratta
Susan Barnes
Roberta & Hugh Barnett
Azim Barodawala
Pamela & Don Barry
Scott Barshay
Bryndl Barter
Laura Barwick & Peter Goswick
John Baxter
Carole & Dan Beauchamp
Jana & Kyle Beauchamp
Elizabeth Becker
Patricia & Richard Becker
Richard Bedlack & Shelly Miller
Eva Beischer
Monet & Charles Beith
Jane Bellet
Janice Benjamin
Alexandra & Andrew Bentley
Nell & Hu Benton
Jan Beresford
Cindy & Evan Berg
Brian Berger
Kim Bergin
Kathryn & Jack Bergstrom
Thomas Berte
Bobby Biddle
Ruth Bierhoff
Jennifer Biggs & Jeremy Hushon

Brenda & Blake Bilstad
Caelia & Andrew Bingham
Martha Black
Lucinda & Robert Blakely
Abigail Blosser
Karen & Alfred Blum
Lisa & Lee Blum
Steven Bobbitt
Wade Boggs IV
Ken Bolich
Joy & Clint Bone
Mattia Bonsignori & ShangHee Jeong
Marsha Booker-Hibbs
Leslie Borsett-Kanter & Steven Kanter
BethAnn & Robert Bowerman
Anne Bowlus
Jennifer Box
Chris Boyer & Jim Force
Nancy & Robert Brame
Jack Branscomb Jr.
Barbara Branson
Luellen & John Bratt
Elizabeth & Jack Braun
Kathy Braun
Berto Brauns
Joe Bridger
Betty Briner
Robin Brody
Mary Brogden
Reid Brogden & Rebecca Davis
Corinne & Michael Brooks
Gene Brooks Jr.
Teddie & Anthony Brown
Mary Ann Brown
Jack Browning Jr.
Nicole Brummer
Betty Brunson
Katharine & Ed Bryson
Elizabeth Buford
Jane Bultman & Frederic Dalldorf
Diane Butler
Rachel & Nicholas Butterfield
Eva & David Bynum
Susan & George Byrne
Correy Cabrera
Nicole Calakos
Miriam Cameron
Lori Campbell
Lori & Bruce Campell
Jean & Andrew Canada
Cari Cannon
Martha Carraway
Carol & Carl Carson
Marla Cates
John Cavanagh & Beth Graham
Mary & William Chambers
Patricia Chamings

Gael & Jerry Chaney
Nancy & Michael Chaney
Jeff Chard
Carol & Bill Charping
Momina Cheema*
John Cheesborough
Elizabeth & Dennis Chen
Lester Hao-Lin Chen
Katherine & James Cherry
Wynda & J. P. Chesson
David Chi
Kathleen & Walter Childs
Brooke Church
Marlene Civis
Lorraine Clark
Patricia & George Clarke
Katherine Clarke-Keffer
Daniel Claster
Cater & Henry Clay
Carolyn & Donald Cleaver
Rose Marie & Andre Clemandot
Dianne & Gary Clinton
Rhonda Cohen & Jay Cunningham
Aaron Cohn
Judith & John Cohn
Suzanne & Herbert Cohn
Charity Cole
Deborah & Craig Cole
Carol Coley & Matthew Libby
Eleanor Collins
Martha Combs
Nina & Edward Comiskey
Helen Compton
Roberta & Eddie Cone
Lauren & Jeff Connolly
Jan Cook
Christine Cooney
Ann & Albert Copland
Carolyn & Peter Cordeiro
Kim & George Cornelson
Jorge Cortese & Amelia Voglino
Catheryn Cotten
David Coughenour
Sara & Jim Coughlin
Meghan Coupe
Anna & James Cox
Josephine & Thomas Cox
Ruth & Carlyle Craven
Lauren & Britton Crigler
Donna & Wilson Crone
Beth Cross
Catherine Crowder
Kurt Cumiskey & Linda Varosi
Erica & David Cummings
Shannon & David Currey
Gail Cutter
Anne & Scott Dacko

Marcille & Thomas Dagleish
Steven Danforth
Teresa & Barry Dark
Ann Davant
Alison Davis
Susan & Peter Davis
Cynthia Dawson
Barbara De Santis
Rebecca & Edo De Waart
Elizabeth & Claude Deal
Flora Dean
Suzanne & Adam Decker
G. M. Deem
Helen & Melodie Dennis
Eileen & John Derecki
Melissa Derr
Yvonne Desmet
Karen & Rick Dibala
Florence & Bill Dickerson
Pat Dickinson
Julia & Marc Dillard
Elizabeth Dixon & Andy Biggs
Grace and Marko Djuranovic
Susannah D'Oench
Elizabeth Domingos
Sarah Domingos
Ann & John Dorminy
Emily Douglas
Judy & Michael Douglass
Justin Doull
Dorothy Doyle
Susie & Richard Drake
Robert Drum Jr.
Corman Drumm
Stephanie DuBois
Ann Dudley
David Dukro
Christine Dyott
Blythe Dyson
Cynthia Eckroth
Suzanne Eden
Suzanne Edney
Bonnie & Robert Edwards
Lauren Egger
Susan & Perry Egger
Andrew Eimer
Barbara Eldredge
Karen & Fred Eldridge
Linda & Jeremy Ellis
Jill Ellis & Matthew King
Randi & Gene Ely
Susan & Allen Ende
Virginia England
Nancy Espersen
Rickie & Ted Esslinger
Marjorie & James Eubank
Susan & Allan Eure

Jacqueline Evans
Ellen Ewart
Janice Eyer
Gabrielle Falk
Andy Fallat Jr.
Margaret Farrell
John Fein
Brian Feingold
David Feldman & Susan Lontkowski
Justin Fick
Hope & Brian Fisher
Jan Fisher & Pete Cowman
Heather & Robert Fisher
Sandra Fisk
Dorlissa & Peter Flur
Anne Fogg
Veronica & Dennis Foley
Wen-Chi Foo & Sid Gospe
Otis Forbes III
Jessica Fore
Carl Fortin & Genevieve Hamel
Judith Fortson
Helen & Benjamin Franklin
Janet & Milton Frenzel
Marta & Donald Fritch
Elizabeth & Frank Fryar
Kathryn Fullerton
Catherine & Stephan Fuss
Dale Gaddis
Catherine Gaertner
Jill & William Gaffey
Nick Gaglio
Richard Gaillard Jr.
Angel Gallardo
Simmons Gardner & Susan Andrews
Annabel Garrett
Vicki Gedge
Ann & Leonard Gettes
Liza & David Gettles
Susan Gidwitz & Gail Freeman
Mary & Alfred Gilbert
James Gill & Anne Kelley
Tona & Peter Gilmer
Caroline Gilmore
Carrick Glenn & Richard Goldner
Ethel Gluck
Paul Goldenberg
Joshua Goldstein
Jane & Peter Good
Ann & Jason Goode
Barbara & Michael Goodman
George Gopen
Chad Gorman & Heather Lubeck
Ethel Gorsuch
Tamela Graef
Leslie Graves & John Fucigna
Will Gray

*deceased

David Green
Mary & Edwin Gregory
Nancy & Lee Grier
Carol & Bill Griffith
Heather & Doug Griswold
Eunice & Herman Grossman
Joel Grossman
Jane & John Hahn
Virginia & James Hale
Maidi Hall
Patricia Haman & Oakley Vincent
Jeffrey Hamburg
Debra & Charles Hamilton
Jocelyn Hamilton
Nancy & Jay Hamilton
Linda & Brian Hanessian
James Hanna III
Gray Harley
Marlys & John Harris
Dorothy & Joseph Harris
Kareen & George Hart
James Hartigan
Lisa Hartstein
Julianne Hartzell
Beth Harvat & Peter Romeyn
Barbara Harvey & Keith Jensen
Sarah & Tom Harville
Lori & Bruce Haviland
Susan & Robert Haynes
Inga Headrick
Donna Hecker
Robert Heiman & Hattie Dietz
Pat & John Hemingway
Elizabeth & Richard Hemming
Bradley Henderson
Karen Henderson
Patricia Henderson
Susan Henning-Rao & Vikram Rao
Corinna & Gordon Herbert
Susan Hester
Katherine Higgins
Luci & Scott Hill
Candace Hitchcock
Evelyn Hoag
Margaret & Richard Hodel
Johanna Hoehl
Wendy & William Hoelscher
Stephen Holloway
Carol Holman
Alison & Andrew Holmes
Barbara Horne
Martha & McDonald Horne
Cameron Howard
Lu & Larry Howard
Penny & Robert Howard
Albert Howlett
Elaine Hsieh & Ryan McCormack

Christina Hsu
Sarah & William Hufford
Claude Hughes & Linda Sakiewica
Scott Hughes
Lloyd Humphrey
Celeste Huntington
Jennifer & Peter Hyde
John Hyde III
Marilyn & Salim Idriss
Carolyn & Lynn Ikenberry
Terrie Inder
Gina Ireland
Ann Isley
Susan Ittner
Nancy Jacobus
Abigail & John James
Harry Jenkins
Harriet Jennings
Linda & Robert Jennings
Debra Jenny
Shan Jin
Anita Johnson
Joanne & Benjamin Johnson
Katherine Johnson
Barbara & Robert Johnson
Carolyn & Marshall Jones
Matt Jones
Shelley & Jeffrey Jones
Sumathi & Evan Jones
Jane & Samuel Joseph
Terry & Fred Jove
Deborah Joy
Laura & Andrew Kagan
Leonard Kamsler
Anthony Kang
Barry Kang
Jeff Kanters
Vinitha Kaushik
Dian Kaye
Martha & John Keller
Frances Kerr & Andrew Balber
Charles Kidder
Julie Kim & Junggil Park
Margaret Kimzey
Anna Marie & Charles King
Lori & David Kirk
Sarah & Brian Kirsch
Caroline Klein
Cheryl Klein
Felicity & Gordon Klintworth
Patricia Knaut & Charles Cloutier
Robin & David Kneeburg
Paul Koepke
Jessica & Brian Kogut
Lynne & Richard Kohn
Frank Konhaus & Ellen Cassilly
Susan & Dick Kosempa

Robert Koslow
Susan & Brian Kradel
Mark Krasniewski
Howard Krasnow
Laurel & Thomas Kraus
Carol Krauser
Heather Krieger
Liz Kuniholm
Carol Kurtz
Anastasios Kydoniefs
Emily & William Lacina
Sandra & Stanford Ladner
Amanda Lambert
Elaine & Richard Lampl
Amanda & Adam Lang
Helen Larsh
Bernice & Chiles Larson
Kathy & Lex Larson
Emera & John LaSalle
Maria & Uri Lavy
Sabin Leach Jr.
Patrice LeClerc
Edwin Lee Jr
Elizabeth Lee & Stephen Bogdewic
Barbara Leib-Young
Carolyn & David Leith
John Lennis
Michael Lentz
Siri Leong
Judy & James Lester
Sarah Lesueur & Charles Herrick
Stephen Lewis
Daniel Librot
Charles Lin
Amy Little
Aiyi Liu & Shidong Yang
Amy & John Livingood
Beth & Mitchell Loeb
Linda & Daniel Lonon
LaNelle & Charles Looper
Lindsey & Alex Lopez
Michael Loven
Ann & Jeff Lu
Jo Ann Lutz & Lawrence Muhlbaier
Susan & Edward Mabry
Michael Macievich
Gay Mahanna
Sally Malkasian*
Tracy Mancini & Norris Cotten
Rosalie Mandel
Reuben Manning
Joseph Manson
Connie Margolin
Christabell Mariner
Nan & Edward Marsh
CoraLynn Marshall
James Martin & Heidi Hullinger

Manuela Martin
Paul Martin
Samuel Martin V
Sarah & Cade Martin
Peggy & Franklin Mason
Philip Massey
Sarah Masters
Helene & James Mau
Alexis Maxwell
Jennifer May
James May Jr.
John Mays
Ellie & John Mazack
Joanne Mazula
Jane McAdoo
Britt & Michael McCarthy
Callie McClendon
Christopher McCormick
Nancy McCormick
Margaret & Clifton McCotter
Amanda McCoy & Michael Sachs
Nancy & Dean McCumber
David McCurrach
Kathleen McDonald
Meredith & Warren McElmurry
Joan McFather
Janet McGough-Csarny & Richard Csarny*
Nancy & James McIntosh
Robin McIntyre
George McKee
Barbara McKenzie
Elizabeth McLachlan
Rosalind McMillan
Anne McNally
Paula McNulty
Anne & Robert McWaters
Caroline & John Mecom
Patricia & Alan Medeiros
Deborah & M. L. Meech
Jill Meinrath
Anne & David Melson
Robert Melton & Victor Cardell
Simone & Christopher Meyer
Patricia Michaels
Jennifer & Matthew Middleton
Kelly Mieszkalski
Jan Milani
Mary Ruth Miller
Patricia & Jon Miller
Norma Milner
Alexander Miron
Chris Mitchell & Cara Richardson
Larry Mitchell
Moir Mitchell
Lauren & Robert Mitchell
Jerald Mize
Anne & Victor Moore

*deceased

Gene Moore
Ken Moore
Sue Morgan
Sarah & Graham Morris
Mary Morrow
Betty & Parker Morton
Katherine Moses & Kenneth Soo
Marc Munfa
Rita & Gerard Musante
Patricia Musgrove
Mary Jo Muzzey
Nancy Myers
Rebecca Myers
Susan Myron
Patricia & Joseph Naftel
Donald Namm
Jessica Nation
Lynne Nelson
Laura Nevius & Simon Woodrup
Marilyn & Bruce Newell
Gloria Newman
Genese & Paul Newman
Pamela Newsome
Sally & Robert Nicholas
Evelyn & B. B. Nicholson
Sonja Nielsen
Emily Nolan
Jean O'Barr
Tracy & Robert O'Briant
Flora O'Brien
Gary Ocheltree
Ashley & Lawrence O'Connor
Helen & Billy Olive
Angela & Michael O'Rand
Linda & William Ormond
Sean-Patrick Oswald
Barbara & Richard Page
Daniel Palubniak & Cathy Schafer
Lynn & Peter Pappalardo
Virginia Parker
Dianne Parks
Narine Pavlova
Martin Payson
Gayle Peacock-Shaffer
Mary Peete
Joan Pellettier
Nicolas Perez-Stable IV
Beverly & Ron Perkins
Catherine & Henry Petroski
Katherine & Edmund Pettiss
Jennifer Phillips
Fair & David Pickel
Karen & Gregory Pierce
Alice & Kyle Pittman
David Plandowski
Alice Pohlmann
Emma & Clay Poindexter

Capie Polk & Jess Baily
Jeddeth & Calvin Pope
Cristyne & James Porile
Diane & Ben Powell
Emily & Bill Powell
Richard Powell & C. T. Woods-Powell
Suzanne & William Powers
Rebecca Powlison
Joan & Jack Preiss
Katherine Preston & Robert Anderson
Jean Prevost
Flora & Barney Price
L. Ashleigh Price & Jonathan Donahue
Melissa Price & Chris Kromm
Rose & Robert Pries
Sarah Prosser & Sean Greene
Marilyn & Reuben Rainey
Mary & Joseph Ramage
Barbara Randolph-Anderson
Sheela Rao
Paige & David Ratonyi
Betsy Raymond
Debra Reames
Farilyn & Kenneth Rearden
Cynthia Reardon
Ashley Reddick
David Reed
Grayson & Jac ReVille
Jason Rice
Peg & Paul Richardson
Deborah & Lester Rick
Janice Rideout
Alana Ridge
Stephanie & David Ridley
Jocelyn Rish
Carolyn & Paul Rizza
Kathy & Doug Roach
Katherine & Kevin Robbins
Sylvianne Roberge
Nancy & William Roberts
Sandy Roberts
Bev Rodgers
Margaret & John Rodgers
Alfonso Romero
Kimerly Rorschach & John Hart
Betty Rosch
Judith Ruderman
Mary Ann Ruegg
Marlene Runte
Tracy Rupp
Linda Russell
Patricia & Gary Rust
J.W. Ruth
Linda & Bruce Ruzinsky
Carol Sackett
Ilana Safer
Edward Samuel

Judith & Richard Sandelin
Ethel & Ulmont Sauls
Carol Saur
Cynthia Savage
Linda & Henry Scherich
Sylvia & Joey Schnople
Douglas Schocken & Dawn Suarez-Schocken
Brian Schroer & Corinne Bazella
Derek Schubert
Deborah Schwengel
Thomas Segal
Laura Sell & Matthew Frank
Anne & Thomas Senf
Marci & Daniel Settle
Ann & Lee Seybert
Warren Shaw
Jerry Sheehy
Steven Sherman
Katherine & John Sherrill
Joanna Shih
Cynthia Shimer & Eric Wiebe
Sara Shook & Brad Rosen
Ella Shore
Cameron Shumay
Michael Shupe
Stacie & Karl Siebrecht
Neal Sigmon & Mary Lawler
Helen & Donald Silver
Mandee Silverman
Joanna Simmons
Emily Simon
James Sink Jr.
Bethany Sinnott
Caroline Siverson
Kimberly & Andrew Skelton
Evelyn Sledge
Harry Slone
Jacob Smith
Kathryn & Whitman Smith
Rebecca & Michael Smith
Sandra & Jeffrey Smith
Sara Smith
Wendy & Gilbert Smith
Amy & Tom Snow
Judith & Robert Snyder
Roberta & Alexander Socolof
Robin & Dave Soran
Dorothy Spangler
Charlotte & John Speltz
Rosa Spivey
Diane Spitz
Kathryn Starns
Katrina & John Steel
Sondra Stein
Ann Stock
Jeanette Stokes
Lucy & Bill Stokes

MaryEllen & William Stone
Sarah & William Strobel
Anne & Elvin Strowd
Robert Stubbs
Sarah & Jeffrey Sumner
Kelly & John Suttles
Mary & Jeff Sutton
Sandra & Bill Tan
Carolyn & Dean Taylor
Meredith Taylor
Donald Teller
Francesca Tenconi
Alice & Clarke Thacher
Ginny & Ike Thomas
Catherine Thompson
Mary & Robert Thornberry
Nancy & Robert Thraikill
Deborah & Charles Tingle
Jeanette & Aubrey Tolley
Mary Touchstone
Caitlin & Mark Traver
Jeanine Tregay
Debara Tucci & Kevan VanLandingham
Marjorie & Russell Tuck
Laura & Bill Tyor
Elizabeth Van Volkenburgh & William Lippitt
Mitchell Vann & Joseph Fedrowitz
Sonya Vaziri
Kirsten Villers
Patricia Vincent
Cynthia & Danny Vines
Laura & Drayton Virkler
Judith & David Vos
Leona Wald
Katherine & Thomas Walden
Linda Walden
Lauren Walker
Jenny Wang
Joan Ward
Jennifer & David Ware
Aileen & John Warren
Betsy & John Waterman
Richard Weaver Jr.
Libby Webb
Victoria & Joseph Webb
Karen & Mark Webbink
Jan & Richard Wechsler
Anne Weinheimer & Jeffrey Hunter
Charles Welch & Andrea Katz
Mona & Wade Wells
Ryan Welsh & Irka Templeton
Karen Welty-Wolf
Andy Wheeler
Betsy & Steve Whitaker
Patricia & James White
Karen White-Tong
Jaimi Whitehurst

Sue Whitney
Sandra Wickham
Virginia & Andrew Widmark
Elisabeth & John Wiener
Abigail & Jason Wilcox
Pelham Wilder Jr.
Ray Wilkins & Roland Wilkins*
Jean & John Willard
Dorothy Williams
Holly & John Williams
Kristy & James Williams
Catherine & John Williamson
Kemp Wills
Anne Wilson
Gail Wilson
Jack Wilson & Marjorie Schiff
Jean Wilson
Nancy & Snodie Wilson
Steven Wilson
Susan Wilson
Sheryl & Robert Winton
Sharon Winzeler
Patsy & John Wispelwey
Jacqueline & Eric Wolin
Paul Womble
Dorothy & Robert Wood
Kim & Jacob Wood
Marie & Donald Wood
Virginia & Thomas Wood
Amelia Woodsmall
Stefanie Wool & David Turetsky
Linda & George Woolley
Donna Worcester
Kara Worthington
Louisa Wright
Lyell & Paul Wright
Amol Yajnik & Karen Kariv
Tiffany & John Yanuklis
Melinda Yelvington
Betty & Charles Young
Monika Zakrzewska
Paul Zarian
Debbie & Daniel Zeligson
Paula & Carl Zielonka
Terry & Bill Zimmermann
Priscilla & Donald Zobel

Student Groundbreakers Society

(full-time students: \$15)

Bryndl Bartter
Julie Bishop
Katherine Booth
Kendall Bradley
Robert Drum Jr.
Lindsay A. Emery
John Fitzgibbons

*deceased

Andrew Gower
Emma Hamm
Louis Hellman
Blake Horowitz
Shan Jin
Laura Jorgens
Robby Kelley
Emily Lang
Chris Li
Andrew Marcum
Sean-Patrick Oswald
David Piccirilli
Alena Reich
Michael Rosenthal

In addition, we appreciate having received 480 supporting gifts below \$50.

Corporations & Foundations

BIN Charitable Foundation
Business Credit Information, Inc.
Carnegie Corporation of New York
Caroline H. Vaughan Charitable Foundation
Civis Group, Inc.
Devonwood Foundation
E. T. Rollins Jr. & Frances P. Rollins Foundation
F. M. Kirby Foundation
Fidelity Charitable Gift Fund Foundation
Goldman Sachs Charitable Gift Fund Foundation
Innovative Emergency Management, Inc.
JP Morgan Chase Foundation
Mary Duke Biddle Foundation
Mary Louise & Maurice W. Grumbles Foundation
Merck Company Foundation
National Philanthropic Trust
Oak Foundation
Opensource Leadership Strategies, Inc.
Pittsburgh Foundation
PNC Bank Foundation
Schwab Charitable Fund Foundation
Shepherd Foundation
Snyder Watchorn Foundation, Inc.
Stacy and H. J. Brody Foundation
The Huisking Foundation, Inc.
Thomas S. Kenan Foundation, Inc.
Triangle Community Foundation, Inc.
Vanguard Charitable Endowment
William R. Kenan Jr. Charitable Trust
Wing Haven Foundation, Inc.

Matching Gifts

Bank of America Foundation
Barclays Capital
BlackRock

Church & Dwight Co., Inc.
Cisco Foundation
Coca-Cola Company
Darden Restaurants Foundation
Desco
Deutsche Bank Americas Foundation
Dominion Foundation
General Reinsurance Corporation
Goldman Sachs & Company
HawkPartners, LLC
Home Depot USA
IBM Corporation
Motorola Foundation
Occidental Petroleum Charitable Foundation
Pfizer Foundation
Starr Foundation
Texas Instruments Foundation
The Greater Cincinnati Foundation
The Scholarship Foundation
Union Bank of Switzerland
Verizon Foundation
Wells Fargo Foundation
Western Asset Management Company

Garden Clubs

Colony Woods Garden Club
Garden Makers

Horticultural Organizations

Hoffman Nursery
North Carolina Native Plant Society
Plant Introductions, Inc.
Specialty Ornamentals
Triangle Orchid Society
Virginia Horticultural Foundation

Community Friends

Abigail E. Blosser Photography
Holly Marie Photography
Image Mill
In His Image Photography, LLC
J. Kim Photography
James P. Cox Photography
Jessica Lobdell Photography, LLC
Kate Peters Photography, LLC
Richard Cox Photographics, LLC
Sarah P. Duke Ikebana International Chapter #264
Sweet Life Photography, LLC
The Study Club

Memorials-2011

Margaret "Peggy" Parsley Adams
Nellie Almonrode
Adrienne Arnot WC'70
John O. "Jack" Blackburn T'51
Betty Gene Gilbert Barron WC'38
Ann Martin Bowen
J. Wesley Brisendine T'64
Roberta W. Brisendine
Andrew Brame
Susan Pollard Browning WC'71
Julia Vernon Burris T'86
H. A. Caldwell
Margaret Callander
Natalie Carpenter
Steven Richard Church F'92
Kalman Cohen
George Corey T'69
Shirley Crumpton
Richard J. Csarny
Edwin Speight Daniel Jr.
Edwin Speight Daniel Sr.
Ruby Thompson Daniel
Ann Dover
William Everett Dukro
Anne O. Durden
Mildred D. Durden
Florence Ely
Jackie Franklin
Rachel Futrell
David Gilbert
Olga Gilliat
Charlotte Brooke Goddin
Faye Granberry-Hardy
Archie V. Hammond
Lorice P. Hammond
Wallace W. Kalle T'43
Joseph N. Katz
Henry E. Kistler Jr. T'57, M'61
Thomas Langford D'54, G'58
William B.S. Leong
Lillian Mandel
Judith Manning
Mary Martin
Arabella Meadows-Rogers WC'71
Nora K. Nicholson
Frances G. Patton T'26
Robert Pope
Alfred E. Powell
Edward Reynolds Price
Lindsay Rawot
Mildred RueElma
Johanna A. Sauer
Phillip G. Schrage
Mary Ann Schuler WC'61
Rodd Secrist E'01
Katherine Sheriff T'01

Rachel H. Sherman T'97
Courtney Shives Jr. T'66
George Smith
Wayne & Dorothy Thrailkill
Harriet Tindal G'40
Adeline Turner
Malcolm P. Tyor M'46
Mary Hickman Vaughan

Honors-2011

Alejandra Blanco
Mary Brown
Grady Carlson T'75
Allison Church
Jane Church
Donald Cleaver Family
Harvey J. Cohen
Catherine V. Cordeiro T'11
Larry T. Daniel
Teresa Dark
Elizabeth B. Domingos T'78
Rebecca W. Dukes WC'56
Robert F. Durden
Kit Flynn G'02
Eva Hoke
Jason Holmes
Alice K. Horton
Anita Johnson
Chase Johnson T'05
Tamara Kilbane
Walker Dillard Kirby
Raymond Klein
Marilyn Lane
J. Horst Meyer
Bobby Mottern
Barbara Newborg
John J. Piva Jr
Kathy Piva
Sheela Rao
Nan A. Schiebel WC'53
Joe Schnople
Mary Semans WC'39
Kyra Socolof
Kelly Suttles
Lara Traeger T'98
Michele Traeger T'95
John Turner
James Vickers
Jean Brown Van Volkenburgh
Robert L. Wilbur T'46
Mark Wilkinson
Tiffany Yam T'09
The Kellogg Team
Class of 1958
Class of 1960
Class of 1961

Class of 1964
Class of 1966
Class of 1971
Class of 1974
Class of 1978
Class of 1982
Class of 1986
Class of 1988
Class of 1989
Class of 1991
Class of 1998
Class of 2005
Class of 2010

Gift Memberships

Elizabeth Albright
Kyle Allen
Susan Antle & Vanessa Kozmon
Ayana Arce
George Arky
Elizabeth Arky
Marion Ashely
Rebecca Bach
Dominika Baran
Lawrence Baxter
Caroline & Byron Beasley
Thersa Chu & Scott Beaudry
Torry Bend
Ryan Benson
Sara Bernstein
Donald Beskind
Vikas Bhandawat
Florence Blakely
Janye Blivin
Kim Bobrosky
Catherine Bowler
James Boykin
Henry Brands
Karine & James Braunger
Kim Brown
Robert Brown
Vincent Brown
Samuel Buell
Priscilla Burcham
William Burk
Angela Burr
Robert Calderbank
George Cheely & Cathy Barchers
Daniel Chen
Rey Chow
Claire Conceison
Darry & Ted Conner
Fran & Wesley Cook
Helen Corbett
Alexandra Couch

Herbert Covington
Ingrid Daubechies
Kathleen & Carter Davis
John De Figueiredo
Megan Dickerson
David Dodson
Joseph Donahue
Elaine Druessedow
Kimberly & Courtney Duren
Richard Durrett
Alison & Josh Edwards
Steven Ellis
Haluk Ergin
John Farrell
Susan Fedor
Bethzaida Fernandez
Grainne Fitzsimons
Laura Florand
Sylvia & Eugene Foreman
Marlene & Paul Fowler
Vicki Fowler
Susan Goble
Kate & Matt Groff
Linda Haas
Cheryl Haltiwanger
Thomas Harkins
Lasana Harris
Frances Hasso
Matthew Hastings
Jennifer Hawkins
Ayana & Bryant Hernandez
Craig Hill
Lori Hilliard & Elizabeth Goacher
Jill & John Hoffman
Sara & Matt Hofmeier
Bobbi Jo & Jason Holmes
Nico Hotz
Laurie & Marc Howlett
Sharon & David Humphreys
Dana Hunt
Sterling & Paul Ingui
Nir Jaimovich
Heather Jarrow
Marc Jeuland
Ginnie Jobe
William Johnson
Scott Jove
Corinna Kahnke
Aaron Kay
Ruth Killam
Mukesh Kumar
Kimberly Lamm
Teresa Langley
Benjamin Lee
Ada LeFevre
Vicky & Jay Littleton
Yessica & Patrick Loor

Nathaniel Mackey
Nancy MacLean
Bruce Maggs
Daniel Marks
Carol Marshburn
Ivan Matic
Laurie McIntosh
Wendy & Ed McNamee
Rex McQueen
MaryJon & John McWhirter
Marlene & Bob Miller
Elen Oneal & Ezra Miller
Kenneth Morton
Martin Moseley III
Barbara Muller
Jay O'Berski
Kimberly Ocheltree
Renee Pridgen
Nina Prieur
Barb & John Pringle
Anne Pusey
Carolyn Quill
Linde Rabl & Margaret Cash
Maxim Raginsky
Joe Rees
Laura Richman
Aretta Roberts
Allen Rodrigo
Jose Rodriguez Garcia
Anne Saliot
Kyle Saunders & Tanya Taylor
Elizabeth Shapiro
Melissa Simmermeyer
Patti & John Simmons
Walter Sinnott-Armstrong
Jenny Skinner
Laurie & Harvey Smith
Kyra Socolof
Cathy Somer
Marc Sommer
Holly Jo Sparks
Ajantha Subramanian
Ann Symm
Victoria Szabo
Peter Torrione
Peter Ubel
Thomas Urban
Sandra Valnes Quammen
Jeanne & Gary Van Vlandren
Charles Wallace
Euphrasia Wallace
Michael Ward
Betsy Williams
Paul Yoo
Xuanhe Zhao
Katie & Bob Zhuang



DUKE GARDENS

Staff

Pictured from left to right: (top row) Jamie Allen, Marcia Julien, Orla Swift, James Jenkins, Jason Holmes, Lindsey Fleetwood, Harry Jenkins; (middle row) Barry Burnett, Paul Jones, Michael Patrick, Jan Watson, Mike Owens, Millicent Snow, Bobby Mottern, Jeff Harward; (front row) Leola Smith, Kate Blakely (work-study student), Caroline Flinn, Jan Little, Bill LeFevre, Sara Smith, Tanisa Little, Teresa Dark, Katherine Magowan, Michelle Rawlins. Absent: Kavanah Anderson, Stefan Bloodworth, Chuck Hemric.

JAMIE ALLEN
Gardening Assistant

KAVANAH ANDERSON
Education Program Coordinator

STEFAN BLOODWORTH
Curator, H.L. Blomquist Garden of Native Plants

BARRY BURNETT
Senior Grounds Equipment Operator
(Duke Facilities Management)

TERESA DARK
Assistant Director of Development

LINDSEY FLEETWOOD
Horticulturist

CAROLINE FLINN
Administrative Assistant to the Director

JEFF HARWARD
Assistant Horticulturist

CHUCK HEMRIC
Director of Volunteers

JASON HOLMES
Curator, Doris Duke Center Gardens

HARRY JENKINS
Superintendent, Horticulturist

JAMES JENKINS
Gardening Assistant

PAUL JONES
Curator, W.L. Culberson Asiatic Arboretum

MARCIA JULIEN
Coordinator of Events

WILLIAM M. LEFEVRE
Executive Director

JAN LITTLE
Director of Education and Public Programs

TANISA LITTLE
Manager, Budget & Cost Allocations
(Duke Financial Services)

KATHERINE MAGOWAN
Horticulturist

ROBERT MOTTERN
Director of Horticulture

MIKE OWENS
Curator, Terraces and Historic Core

MICHAEL PATRICK
Assistant Horticulturist

MICHELLE RAWLINS
Horticulturist

LEOLA SMITH
The Terrace Shop Manager
(Duke Stores)

SARA SMITH
Registrar

MILLICENT SNOW
Development Assistant

ORLA SWIFT
Director of Marketing & Communications

JAN WATSON
Horticulturist

EVENT SUPERVISORS:

Brooks Brittingham
Bijan Karkouki
Ali Karkouki
Nikki Karkouki
Pat Radack
Laurie Matney
Thomas Williamson

SUMMER INTERNS:

Lindsey Fleetwood
Matt Luks
Armando Perez
Nicholas Schwab

WORK-STUDY STUDENTS:

Jessica Andrews
Kate Blakely
Tim Buskey
Nathan Hays
Benson McGlone
Tyler Smoot
Stefan Streckfus
Brad Underwood
Paul-Harvey Weiner

the sarah p. duke gardens

board of advisors

Ellen C. Adams, *Woods Hole, MA*
Anne Micheaux Akwari, MD, Chair, *Durham, NC*
Taimi T. Anderson, *Chapel Hill, NC*
Cynthia Brodhead, JD, *Durham, NC*
Richard W. Fisher, *Durham, NC*
Thomas S. Harman, JD, *Arlington, VA*
Anna Ho, *Durham, NC*
Alice K. Horton, *Durham, NC*
Christine J. Huber, PhD, *Vice Chair, Durham, NC*
Susan W. Hudson, *Wilson, NC*
J. Horst Meyer, PhD, *Durham, NC*
Amy M. Moss, JD, *Durham, NC*
Lois P. Oliver, MD, *Durham, NC*
John J. Piva Jr., *Durham, NC*
Jefferson B. Prather, *Chapel Hill, NC*
Charles A. Reid, *Baltimore, MD*
Frances P. Rollins, *Durham, NC*
Douglas W. Runte, *New York, NY*
Michael J. Schoenfeld, JD, *Durham, NC*
Daniel S. Shiff, *Potomac, MD*
Thomas R. West, JD, *Raleigh, NC*
Richard A. White, PhD, *Hillsborough, NC*
Faye Wickersham, *McLean, VA*
Sterly L. Wilder, *Durham, NC*
Ruby L. Wilson, EdD, *Durham, NC*
Sara B. Zabloutney, JD, *New York, NY*

Honorary Member:

Mary D. B. T. Semans, *Durham, NC*

FOR MORE
INFORMATION,
PLEASE VISIT:
gardens.duke.edu

Cover photo of ginkgo (*Ginkgo biloba*) by Cal Wong.

Main photos by: Robert Ayers (pg. 1, 11, 16), Lashelle Chappell (p. 23),
Rick Fisher (pg. 6), Luster Studios (pg. 24),
Orla Swift (pg. 3, 18), Charles Twine (pg. 14)

Additional photos by: Robert Ayers, Rick Fisher,
Jon Gardiner/Duke Photography, Annie Nashold, Sweet Life
Photography (p. 22, left, & 25, top), Orla Swift.



*Sarah P. Duke Gardens creates and nurtures an environment
in the heart of Duke University for learning, inspiration and
enjoyment through excellence in horticulture.*

gardens.duke.edu | Box 90341 | Durham, NC | 27708-0341