



SARAH P. DUKE GARDENS

2010 *annual report*

Statement of Operations
07.09 - 06.10

REVENUE

EARNED INCOME

Facility rentals	360,637
Endowment income	439,492
Programs & special events	121,718
Total earned income	921,847

CONTRIBUTED INCOME

Duke University allocation	1,014,295
Other university support	332,343
Annual Fund	365,238
Foundations	94,721
Other program support	151,556
Total contributed income	1,958,153
Total revenue	2,880,000

FUNDRAISING

	09-10	08-09	07-08
Current operations (unrestricted)	537,912	484,216	433,012
Capital projects/programs (temporarily restricted)	170,880	718,409	305,681
Endowment (permanently restricted)	783,004	90,543	505,106
TOTAL	1,491,796	1,293,168	1,243,799

EXPENSE

Salaries & fringe benefits	1,486,098
Horticultural operations	465,494
Programs and special events	210,044
Marketing and PR	38,855
Development	71,466
Administration	235,538
Occupancy	332,343
Reserve for future commitments	40,162
Total Expense	2,880,000

LETTER FROM THE EXECUTIVE DIRECTOR	6
2010 IN REVIEW	8
FRIENDS OF DUKE GARDENS	28
OUR STAFF	44
BOARD OF ADVISORS	46

7,500

audience members
at Duke Gardens'
free 75th anniversary
concert with Sweet
Honey in the Rock



FROM THE EXECUTIVE DIRECTOR

Planning is an ongoing activity at the Sarah P. Duke Gardens, from the earliest planting plan by horticulturist John Casper Wister of Philadelphia in 1935 to Ellen Shipman's exquisite Italianate design for the Terrace Gardens in 1937, the first master plan by landscape architect William B.S. Leong of Boston in 1959 (revised by Leong in 1977 and by the firm of Linda Jewell-Landscape Architect in 1979) and the most recent master plan developed by Marshall-Tyler-Rausch of Pittsburgh in 2004.

Over the past year the pace of planning has increased, with several projects in development to be constructed in 2010-2011. That work saw the return of an old friend to Duke Gardens, landscape architect Sam Reynolds of Reynolds & Jewell Landscape Architecture. Sam's work in the Gardens over the past quarter century is extensive in the W.L. Culberson Asiatic Arboretum and H.L. Blomquist Garden of Native Plants, dating back to his earliest work with Linda Jewell on the Asiatic Arboretum dam and pond. Numerous structures designed by Sam include the Kawaramon (Tile-Roof Gate) main entry to the Asiatic Arboretum, the Ayamebashi (Iris Bridge) over the Arboretum Pond and the Gate House and Bird Viewing Shelter in the Blomquist Garden. This past year Sam completed a design for a new covered bridge in the Blomquist.

Currently, Sam is working with our staff on designs in the Historic Core and Terraces and the Doris Duke Center Gardens, including redesigns of the Page-Rollins White Garden and the Rose Garden and a new feature above the Rock Garden, the Frances P. Rollins Overlook. His work is now truly Gardens-wide.

Our staff in the past year also embarked on final plans for the long-awaited Charlotte Brody Discovery Garden and reworked our main entrance on Anderson Street. We also collaborated on an ongoing major storm water project with the university that allowed us to rebuild the culvert below the Terraces and concurrently completely rebuild the Fish Pool, through the generosity of a dear friend of the Gardens.

As much as 2010 was the year of planning, 2011 will be the year of implementation. As always, none of this progress could be made without substantial support from Duke University, the hard work of our dedicated staff and volunteers, and the generosity of all the Friends of Duke Gardens. Thank you and all those who came before who created and nurtured the Sarah P. Duke Gardens over the decades.



Sincerely,

A handwritten signature in black ink that reads "Bill".

William M. LeFevre, Executive Director



GARDENS CONNECTIONS

TERRY BRITTON

Volunteer | strolling Gardens flutist

I've been playing for years outdoors, since the late '70s. It occurred to me that I was tired of playing inside. I was living in Cambridge at the time, and on the way to Harvard Square I was always passing by this bookstore where the proprietor was friendly. And so one day I stopped in and asked him if he would mind if I played in front of his store, practiced in front. He said, "Oh, not at all. I would love it."

So I became a street musician. I wound up doing that for a living for a couple of years. I loved it. I played Harvard Square every day, eight hours a day. It turned me into a real musician. And then when I moved to New York, while I was job-hunting and stuff, I went out and made money playing the flute out on Wall Street and Broadway, in front of the RKO Theatre, stuff like that. But later on in years it became just a hobby and I started doing the improvising and playing in SoHo and in front of the Museum of Fine Art up on Fifth Avenue. I really got into the improvising live.

I've been doing it ever since, just as relaxation. And the Gardens are such a nice location for that. I sometimes play early, while everybody's out there working, all the volunteers and staff, and they totally love it.

It's so relaxing and mellow, and the air is good. And there are so many nice spots where I can either stroll or there are a lot of beautiful places to sit, and it's easy to be reflective.

IN THE GARDENS

Many changes in the Gardens in the last year took form on the drawing board. It was a year of ambitious planning for improvements throughout the Gardens.

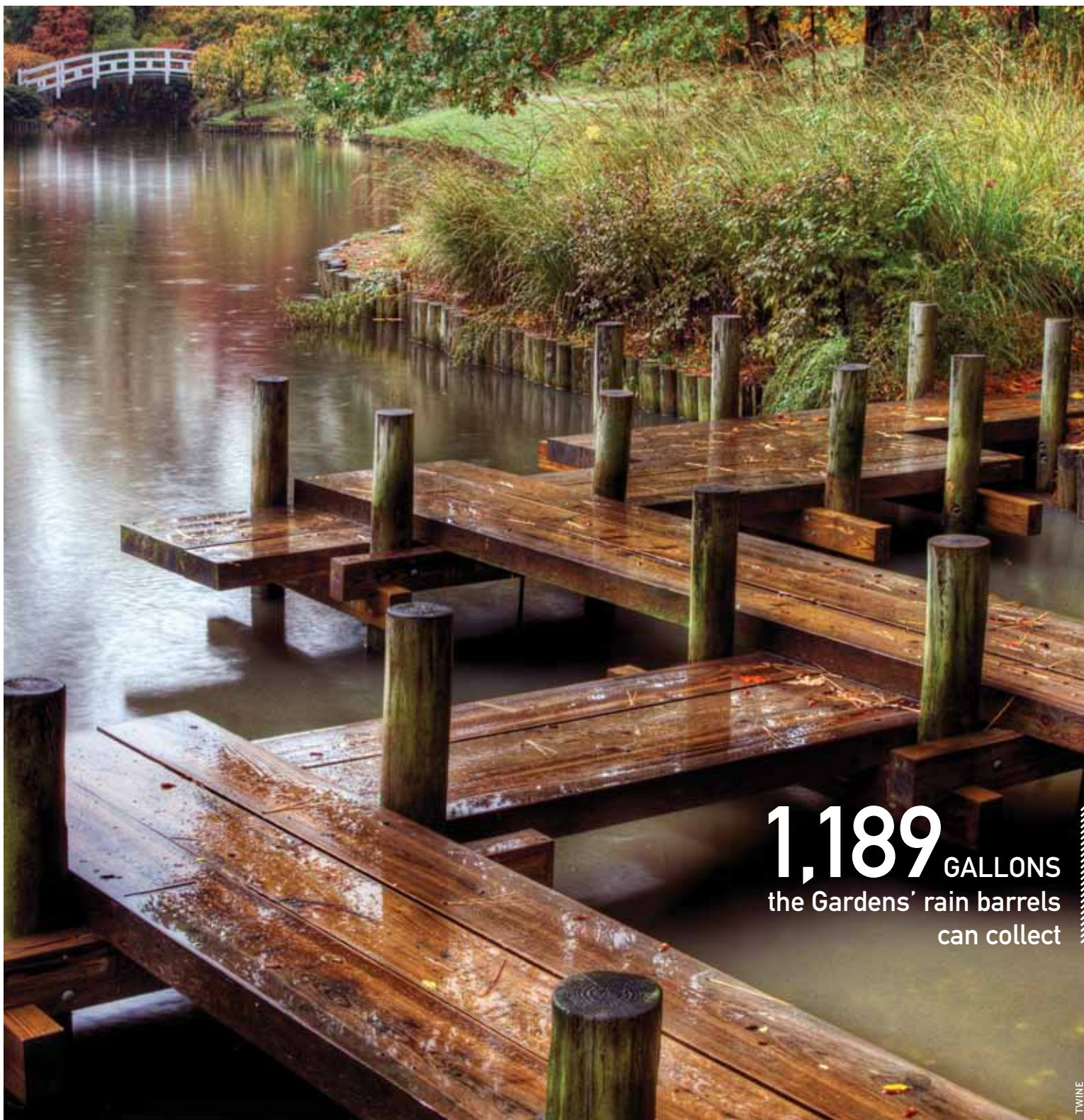
Some of these projects focus on maintenance upgrades to improve the quality of our facilities and displays, while others introduce new outdoor spaces that add to the rich diversity and excellence for which Sarah P. Duke Gardens is known. We look forward to sharing these improvements with you and our visitors.

Fish Pool and Storm Water System Repair

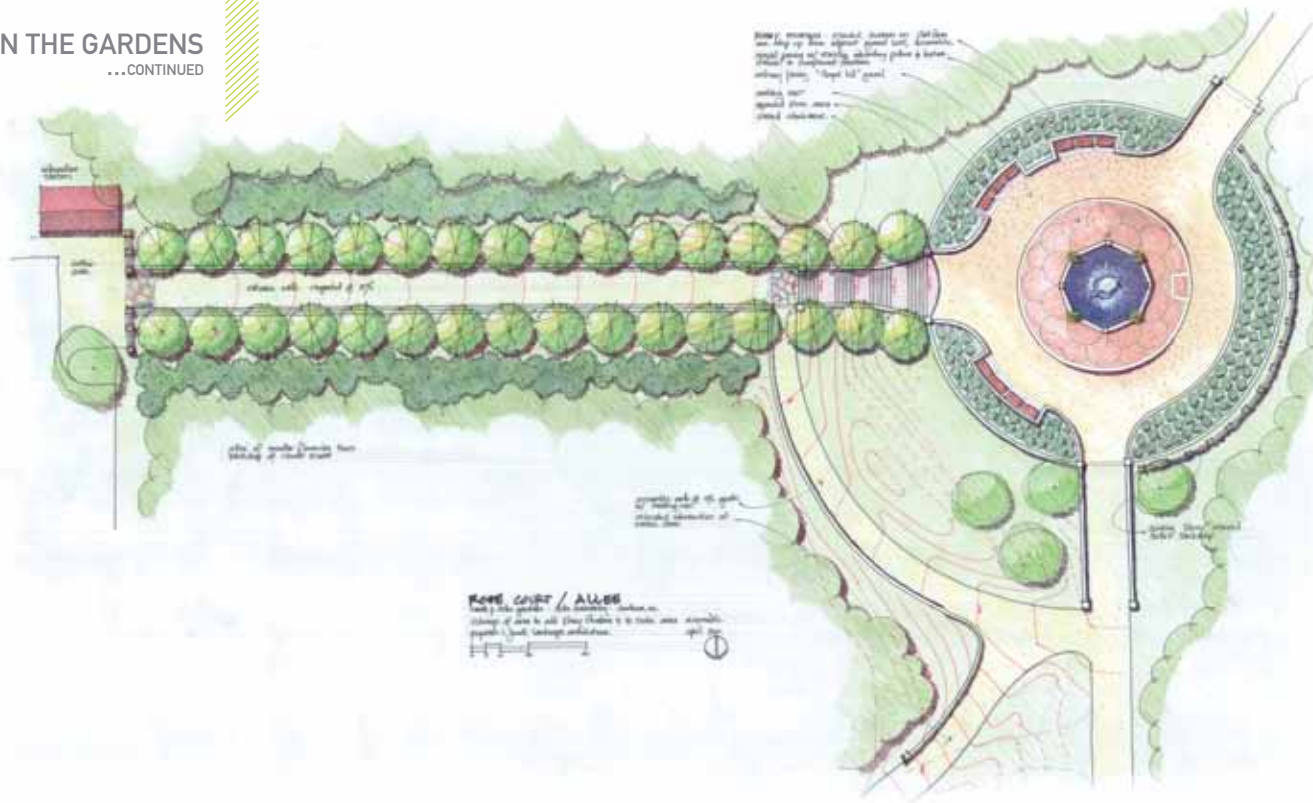
With major new construction upstream at Duke University Medical Center, the Gardens agreed to receive additional storm water runoff in return for long-needed repairs to the Gardens' storm water infrastructure. This major project consisted of three main parts: expanding the North Pond, replacing the culvert beneath the Terraces and renovating the Fish Pool.

The North Pond work began in mid-March and was completed in early April. The pond was drained, excavated and expanded.

The second phase of the storm water improvements began in mid-April and continued through the summer. Crews replaced the original box culvert running beneath the lower terrace and connected the new culvert to the drain pipes that had been installed during the South Lawn Renovation in 2007.



1,189 GALLONS
the Gardens' rain barrels
can collect



Rose Garden and Roney Fountain

A vision established in William Leong's 1959 master plan for the Rose Garden is finally coming to fruition: a fountain will be added to the center. The fountain previously sat in front of the East Duke Building on East Campus, where it was installed in 1901. Anne Roney, sister-in-law of Washington Duke, donated it to what was then Trinity College in Washington Duke's honor. In recent years it fell into disrepair.

After the university and Duke family members gave their blessings for the fountain's transfer, it was removed so it could be restored. It will be relocated to the newly named Mary Duke Biddle Rose Garden in early 2011, along with the pool's original granite coping. The Rose Garden improvements will also include a handicapped-accessible ramp, additional seating and a pergola overlooking the Rose Garden and Perennial Allée. The Roney Fountain restoration is made possible by a bequest from the late Dr. J. Robert Teabeaut II (T'45, M.D.'47) in honor of Mary D.B.T. Semans. The Rose Garden improvements are a gift from the Mary Duke Biddle Foundation.

We have also re-graded the entrance from the Rose Garden into the W.L. Culberson Asiatic Arboretum so that wheelchairs may smoothly enter. Those and other arboretum entrance gate improvements were made possible by longtime Gardens friend Nan Schiebel, who donated the gate in 1992 in memory of her parents.

Rose Garden improvements will also include a handicapped-accessible ramp, additional seating and a pergola...

We will improve the plantings in the Linden Allée above the Rose Garden and update the path to meet federal disability guidelines for proper slope. Sam Reynolds, of Reynolds & Jewell Landscape Architecture in Raleigh, is developing the design with Gardens staff.

Page-Rollins White Garden

Sissinghurst Castle Garden in England is the inspiration for the remodeling of the Page-Rollins White Garden. It will feature outdoor "rooms" displaying white blooming flowers throughout the seasons. Sam Reynolds is redesigning the garden, which will greatly enhance and complement the Doris Duke Center, Angle Amphitheatre, Virtue Peace Pond and Woodland Garden. We hope to complete the work by spring 2011.

...SHOWN ABOVE
design for Mary Duke
Biddle Rose Garden and
main entry allée

The third part of this project was the Fish Pool renovation, which began in late March. Records show the Fish Pool has leaked for more than 40 years. In order to repair the culvert, workers had to breach the shared walls with the Fish Pool, so we took the opportunity, with the help of a generous friend of the Gardens, to completely rebuild the Fish Pool. While maintaining the original Duke stone veneer, we added state-of-the-art pumps, filters and aeration, as well as automated control systems that monitor pH and oxygen.

The new plumbing will circulate water in a closed system to the pool, the terrace fountains and the rock garden waterfall that will now flow again into the Fish Pool. This will ensure clear water and a healthy environment for fish and plants, and a great view of the fish for visitors.

The construction hindered visitors' access to the area, but we used green screening and large potted plants to maintain an attractive view from the Pergola.

The final step in terrace-area improvements is a gift from another generous friend. The Frances P. Rollins Overlook at the top of the newly re-exposed Leubuscher Rock Garden opposite the Terrace Gardens offers visitors a comfortable vantage point to enjoy one of the best views in the Gardens.



...SHOWN ABOVE
Fish Pool construction;
Gothic Gates

Charlotte Brody Discovery Garden

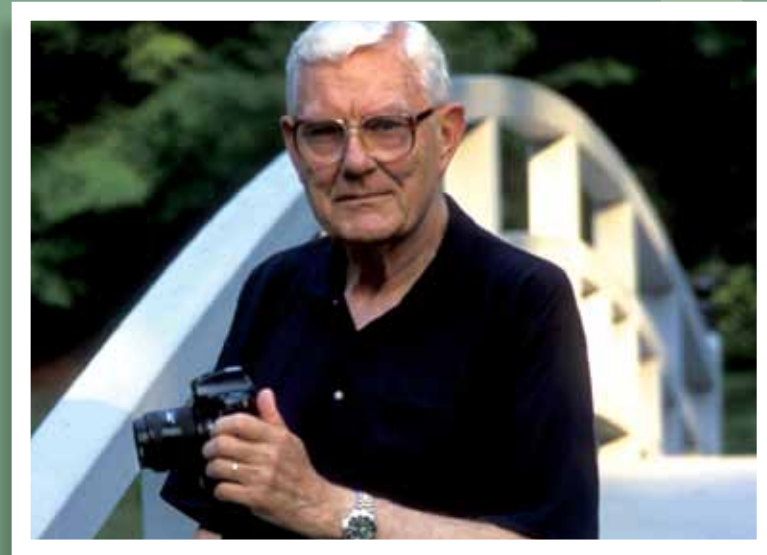
The Charlotte Brody Discovery Garden will be a place for children to enjoy the science of growing organic fruits and vegetables. School children and visitors will learn from the garden that this planet is our home, and by growing food crops they will develop an awareness of the connections between plants, animals and people.

The garden will be located in the open meadow on the north side of the Woodland Garden. It will accommodate school groups, families, Duke students and other gatherings. We're designing it in-house, with our own team of experienced horticulturists and landscape architects, and with additional assistance from Ellen Cassilly Architect Inc. and Jesse Turner, of JTLA Landscape Architecture. Construction is planned to begin by year's end and should be completed in late spring 2011.

The Discovery Garden was selected as one of 100 prototype projects nationwide in the Sustainable Sites Initiative, which is testing a new ratings system for landscapes that is similar to the LEED green building certification program.

Main Entrance Improvements

You've probably noticed the first phase of this project, sidewalk installation, which provides a safe walkway from Anderson Street to the Gothic Gates. Working with the university and the City of Durham, we also addressed the long-standing issue of unregulated parking and pedestrian and bicycle safety along Anderson Street. A no-parking zone is now in place along the entire length of Anderson Street, providing bicycle lanes and allowing easier access to our main entrance for buses and other large vehicles.



GARDENS CONNECTIONS

EDMUND ALBRECHT

Volunteer photographer

When we moved up here, we'd left Pensacola, Florida, and for about 11 years I'd been a volunteer in the National Park System taking pictures of the Gulf Islands National Seashore. I did a tremendous amount of photography of all kinds. So when we left there I felt a big void in my life not having that outlet to use what skill I had, photography, for someone who needed it. And the Gardens filled that void completely.

I was given the opportunity at a time when it was very important for me to put my feet down and get my roots down here in North Carolina. I had the feeling at the time that the Gardens could use some good pictures, put it that way. At the time, the director of development, Jean Carr, had done a presentation of Duke Gardens pictures here at The Forest at Duke within the first year or so that we were here. That would have been about 1992. When she finished, several friends of ours came to me and said, "Ed, have you considered volunteering your photographic skills to the garden?"

I went to see the development director, and I remember walking in and I said, "I just thought I'd stop in and see if you need a volunteer photographer." And of course her first question was, "What kind of a camera do you have?" Well, I explained that I had several cameras. And then I took out some pictures I had made, postcards and such that had been made of my pictures for Gulf Islands National Seashore. And she said, "When can you start?"

It was just a wonderful opportunity, and it fortunately filled a need that the Gardens had, and it wasn't anything that I wanted to blow my horn about, put it that way. I was just doing what I could do to help them use those pictures to let people know what was happening at the garden and to have a much better view of what goes on there. In a couple of years we started these yearly calendars, and the first 10 issues had nothing but my pictures in them. And Kay Bunting and Jean Carr have commented, and I'm just quoting them, that those pictures were extremely important, certainly much more so than I ever expected, in letting people know what was happening at the Gardens, how beautiful they were 12 months of the year.

Nothing could have been kinder said to me than that – that I was helping in this manner of letting people know how wonderful the Gardens are.

What happened, of course, is that my body didn't keep up with being capable of carrying a 20- or 25-pound camera bag up and down those hills and walking to all those places that you needed to see to properly record what was happening and so forth. My knees gave out, and that's when I felt it was necessary to tell Chuck that we needed to recruit some more photographers. And we were fortunate, I think. It took us a couple of years to get some people who were really interested, but I think the people who have taken over that job of providing pictures for the annual calendar have done just an excellent job. I felt really very satisfied that it was being continued.



EDMUND ALBRECHT
Volunteer Photographer



32
competition hybrid
water lilies in the
Virtue Peace Pond

TWINE



...SHOWN ABOVE
The Page-Rollins White
Garden in spring, and the
Blomquist Gate House
after a snowfall

The next phase of the project includes new plantings along the Gardens' side of Anderson Street and down either side of the entrance drive. We hope you have already noticed the dramatic plantings that curator Jason Holmes and horticulturist Tamara Kilbane designed in the entrance island bed. This and additional plantings will provide a taste of the rich horticultural display that visitors will experience in the Gardens.

Future plans call for an information kiosk near the Gothic Gates, where visitors will be greeted by a Gardens representative and receive maps and other information.

East Meets West Garden

This new connector between the Doris Duke Center and the W.L. Culberson Asiatic Arboretum began with a generous gift from The Amos and Ruth Fowler Foundation in 2002. With a design created by curators Mike Owens and Jason Holmes, we have completed Mrs. Fowler's vision for a garden to embrace the "symbolic meeting of the East and West plant communities represented in Duke Gardens through the H.L. Blomquist Garden of Native Plants and the Asiatic Arboretum."

Improvements included creating a natural seating nook under the large crabapple tree and relocating the Nishinoya stone lantern, given by the Fowler Foundation in 2003 in memory of Mrs. Fowler, down the lawn to extend the view from the Doris Duke Center. We also installed a pedestrian path connecting the Doris Duke Center to the Asiatic Arboretum and Woodland Garden and added boulders and dry stack Duke stone walls along the perimeter path. This garden, combined with the renovated Page-Rollins White Garden, will greatly enhance the Doris Duke Center as an event venue and improve connectivity as visitors meander from the Doris Duke Center to points beyond.

...SHOWN ABOVE
The Gate of the Blue Heron
in the Japanese Pavilion,
and the newly painted
Ayamebashi (Iris Bridge),
both in the W.L. Culberson
Asiatic Arboretum

And more...

Elsewhere in the Gardens, an iconic vista transformed this summer, when the Ayamebashi (Iris Bridge) over the Arboretum Pond went from pale gray to bold red. This carefully chosen color is more in keeping with the arboretum's Asian theme, and it will provide a particularly breathtaking and photogenic vista when the foliage around the bridge turns to fall reds and oranges.

...this carefully chosen color is more in keeping with the arboretum's Asian theme...

You may have noticed some new views created by judicious tree-trimming. The most dramatic of these is the clear view of Duke Chapel from the Pergola, which is especially stunning in early spring, when framed by wisteria and cherry blossoms.

We installed a new walkway and several new benches in the Memorial Garden, where the plantings are also filling out and maturing, making the garden an ever more attractive place of respite for visitors and for relatives and friends of those whose ashes are buried there. The azaleas looked magnificent in spring, and the daffodil bulbs we're planting will bring us an even more dazzling display next spring.

A gift from the children of the late Dr. Lloyd Borstelmann enabled us to create a new seating area along the pond's edge in the W.L. Culberson Asiatic Arboretum, near the Zig-Zag Bridge. We had worked with Dr. Borstelmann years earlier to install boulders and a Japanese stone water basin adjoining this site in memory of his wife, Jane.



...SHOWN ABOVE
design draft for the
Frances P. Rollins
Overlook

Elsewhere in the Arboretum, the decorative fence and gates surrounding the Japanese Pavilion have been completed. And the tea garden (roji) now has its own little bamboo fence and gate, dividing it into inner and outer sections. Pavilion designer Derek Jones is currently drawing up plans for a small waiting shelter (machiai), which will be in the outer roji.

Volunteers and staff members planted hundreds of new plants in the Perennial Border in the spring, following a redesign by curator Mike Owens. The border will get additional plantings next spring.

making significant improvements to the gardens to better serve our visitors

In the H.L. Blomquist Garden of Native Plants, plans are brewing for a new covered bridge to replace the bridge near the entrance to Blomquist.

We hope you enjoy these enhancements, and we thank Duke University and all the generous Friends of Duke Gardens who make these improvements possible.



GARDENS CONNECTIONS

ELIZABETH ZANDER

*Farmhand club member & Honey Patch
community garden coordinator*

I've never had a vegetable garden before. But I've always been interested in sustainable agriculture and organic gardening. We often don't think about where our food comes from. And so understanding all the resources that went into growing what we did gives you a better appreciation for the energy that you're consuming, which ties in to my concentration, which is the use of energy and efficiency. Agriculture is actually a very energy-intensive process, especially the way a lot of farming is done in the United States.

Also, I think a lot of people think about organic gardening as it pertains to their own health, like how digesting certain pesticides and insecticides might affect them. But I try to think of it as to how it'll affect where the gardening actually is happening, and the workers. It's their health. When you purchase something that might be a little more expensive because it's organic, then the pickers don't have to deal with all those chemicals. And the watershed in that area doesn't have to deal with the runoff.

5,000

TULIP BULBS
planted in the
Terraces in spring



GARDENS OUTREACH

Sarah P. Duke Gardens has been a service to the Duke and local community ever since its first irises bloomed. Visitors can relax here, enjoy the beauty of the landscape and be reminded of our symbiotic relationship with nature.

We continually strive to develop even more ways to be of service – to the community, the Gardens, the university and the planet. This year has been a productive one in pursuing those goals.

Reaching Children

Our youngest visitors hold the keys to the Gardens' future, so our children's program is a vital component of our outreach and education. Among new developments this year, Duke Gardens expanded its connection with area students through the **Durham Arts Council's CAPS program** (Creative Arts in Private and Public Schools).

We also added Family Teas to our roster of continuously sold-out **Japanese Tea Gatherings**. And, with generous funding from Duke's Asian/Pacific Studies Institute and the Center for Global Partnership, we sent the arboretum's cultural programming coordinator, Nancy Hamilton, to Hawbridge School in Saxapahaw for a two-week residency that culminated in two student-led Tea Gatherings in our Japanese Pavilion and the formation of a tea club at their school.

Healing and Hope Through Science, which brings science education to Duke and UNC-Chapel Hill's children's hospitals, is also making exciting strides toward expanding nationally. Program coordinator and educator Katie Stoudemire was a guest speaker at the American Public Gardens Association's national conference in June.





GARDENS CONNECTIONS

BEVERLY MEEK

*Arts outreach & communications assistant,
Duke Vice Provost Office for the Arts
Plant & Craft Festival enthusiast*

I grew up on a farm where we grew our food. The farm was really about feeding us. My father was a farmer and he had a job. My mother was a teacher and a farm wife. That's been my life, being outside. I realized when I was in the MALS program here at Duke, in a course I took at the Nicholas School, how connected I felt to the place where I grew up. And I learned more from a wonderful instructor there, Sally Schauman, about being embedded in nature, and how we are connected to the planet. And it just helped open up so much in my mind about how I feel connected to being outside, being in the soil, plants, dirt, what it does for me.

That explains why I love going to the Gardens' plant sales. I don't even have to buy a lot. I love just going and seeing the plants, what's available. Even the plants that are on sale, that have suffered, they can thrive. I learned that you're buying the roots, not the stems.

All those things, you find them in metaphors in your life. Plants and what you do with them have a deeper meaning in life, if you open yourself up to it.



...SHOWN ABOVE
horticulturist Tamara
Kilbane leads a
Water Lily Walk, and
Rick Fisher works
with the volunteer
propagation team

Reaching Adults

Gardens visitors now know a lot more about our plants and programs, thanks to two developments. Our volunteer **Garden Ambassadors** now greet visitors at the main gate on weekdays, offering informational publications and answering questions. As the program grows, we hope to post ambassadors at additional entrances and on weekends. And in the Terrace Gardens, you can ask plant questions of volunteers from the **Durham County Cooperative Extension Master Gardener** program on Wednesdays, twice monthly in spring, early summer and fall and once a month in August and November. The new **Durham Garden Forum** also meets monthly at Duke Gardens, offering horticultural information to members and the public.

Our **adult education program** continues to grow, both in scope and depth. We offered 45 percent more classes than in the previous year, attracting 50 percent more registrations. And our **volunteer program** is also thriving; 241 active volunteers donated 15,735 hours in the last fiscal year.

The Gardens has strengthened its partnership with Duke's **Nicholas School of the Environment** in the last year. In February, we co-hosted gardening author Toby Hemenway for several seminars and lectures on permaculture, including a sold-out lecture at the Nicholas School. Nicholas School students also manage our Honey Patch community garden, and several of them participated in a turtle rescue in our North Pond in fall, preceding construction there.



...SHOWN ABOVE
Alice Zawadzki leads a children's program, and Kooley High sings at Music in the Gardens



...SHOWN ABOVE
Paperhand Puppet Intervention performs at Arts in the Garden, and Sweet Honey in the Rock member Aisha Kahlil sings to the crowd at the Gardens' 75th anniversary concert



In our **online outreach**, Duke Gardens' video collection continues to grow, with short films ranging from plant sale previews to features on spring ducklings, water lilies and American Dance Festival students performing in the Gardens. Of the more than 3,000 videos in Duke on Demand's university-wide online database, Duke Gardens has five in the top 100 most viewed. Our Facebook community is also expanding, as is our Twitter following. Both sites have proven ideal in getting the word out about our events, as well as engaging Gardens supporters to discuss Gardens developments and post their favorite Gardens photos. You can find links to these features in the news section of our home page, gardens.duke.edu.

Facility Rentals and Special Events

The Gardens hosted an impressive array of special events in the past fiscal year, most notably the free 75th anniversary concert by **Sweet Honey in the Rock** in late August on the South Lawn. About 7,500 people attended, including Duke students and staff, Durham residents and even fans from as far away as New York City. We co-produced the concert with Duke Performances, and it was such a hit – with minimal impact on the grounds, despite the crowds – that we may consider hosting more large public events in the future.

Duke Performances presented another **Music in the Gardens** summer series, once again drawing on its successful blend of classical and independent music for its 12-show lineup. The

concerts draw many first-time Gardens visitors, and fans often arrive early to enjoy a picnic and explore the grounds.

We hosted another popular **Family Fun Day** in May, which coincided with Paperhand Puppet Intervention's sold-out Arts in the Garden performance and culminated with a participatory puppet parade. And the second summer season of our **Movies in the Gardens at Twilight** free family film series on the South Lawn drew enthusiastic crowds.

The **International Waterlily and Water Gardening Society's 2010 New Waterlily Competition** was a major summer attraction, its 32 competition hybrid water lilies drawing many visitors to the Virtue Peace Pond and to our online gallery and voting site. The society has asked the Gardens to host the competition again in 2011.

fans often arrive early to enjoy a picnic and explore the grounds...

Facility rentals to Duke and outside organizations remained strong, at 315 total, including 133 Duke department events and 92 weddings. Among other special events that Duke and outside organizations hosted at the Gardens were a Triangle Gay Men's Chorus concert, a BounceBack Kids fundraiser, a team captain breakfast for the Susan G. Komen Race for the Cure, and Duke President Richard H. Brodhead's champagne toast for graduates, faculty and families.

FRIENDS OF DUKE GARDENS

Gifts received July 2009-June 2010

Mary Duke Biddle Society

\$5000+

Rex & Ellen Adams
Dr. Marcia Angle &
Mr. Mark Trustin
Mr. & Mrs. Brit J. Bartter
Ms. Renee Elizabeth Becnel
Dr. James F. Bonk
President & Mrs. Richard H. Brodhead
Dr. & Mrs. H. Keith Brodie
Mr. & Mrs. Hyman J. Brody
Drs. Janet & William Brown
Mr. & Mrs. A. Clarke Church
Mr. Allen S. Church
Dr. Chicita F. Culberson
Mrs. Juliet H. Davis &
Mr. W. Burke Davis *
Mr. Thomas S. Harman
Mr. & Mrs. George A. Horton
Mr. & Mrs. Gregg E. Ireland
Hon. & Mrs. James P. Jones
Mr. & Mrs. Daniel S. Katz
Mr. & Mrs. John C. Ketner
Mr. & Mrs. Christopher J. King
Mr. Eric E. Krantz
Dr. Chris Macheimer &
Dr. Robert Macheimer *
Ms. Joan R. Mertens
Dr. & Mrs. J. Horst Meyer
Mr. Ken Moushegian
Mrs. Toshiko Nakayama &
Mr. Yukio Nakayama *
Dr. Barbara C. Newborg
Mrs. Mary B. Newman
Mr. & Mrs. John J. Piva, Jr.
Ms. Kate M. Piva &
Mr. Kenneth P. Mitchell
Mrs. Frances P. Rollins
Drs. Diane & Robert Schaaf
Mrs. Nancy Alyea Schiebel
Mrs. Mary D.B.T. Semans
Mr. & Mrs. Karl S. Sheffield
Dr. & Mrs. John T. Sigmon
Mrs. Molly Simes
Mr. & Mrs. W. John Swartz
Mr. & Mrs. Robert C. Taylor
Ms. Andrea S. Thomas
Dr. Ethel Weinberg
Mr. & Mrs. Warren G. Wickersham

* deceased



Directors Society

\$2,500 - \$4,999

Dr. & Mrs. Bruce Barron
Mrs. Dorothy Rose Borden
Mr. & Mrs. William A. Coolidge, Jr.
Professor & Mrs. Robert F. Durden
Mr. & Mrs. Richard W. Fisher
Mr. Gary Stephen Gosnell
Drs. Christine & Joel Huber
Dr. Lois P. Oliver
Mr. Scott N. Pierpont
Ms. Mary R. Robinson
Mr. Douglas W. Runte &
Ms. Kimberly Purvis
Ms. Ruth Wade Ross
Mr. A. Courtney Shives, Jr.
Mrs. Katherine G. Stern
Dr. Teh Y. Tan
Drs. Xufeng Xi & Lijuan Huang

Pergola Society

\$1,000 - \$2,499

Drs. Anne & Onye Akwari
Ms. Margaret S. Babb
Dr. & Mrs. John O. Blackburn
Mr. Paul A. Bong
Mr. & Mrs. Albert Buehler
Mr. & Mrs. James M. Daniel, Jr.
Dr. & Mrs. John M. Daniel
Mr. Larry T. Daniel
Ms. Mary H. Dawson
Mr. John Derecki &
Ms. Eileen McCorry
Ms. Elizabeth Dixon &
Mr. Andy Briggs
Mrs. Evebell Dunham
Mr. Philip Ellis Erlenbach
Mr. & Mrs. William T. Farrell
Mr. & Mrs. Brian L. Finlay
Dr. E. Ruffin Franklin, Jr.
Mr. & Mrs. W. Barker French
Mr. & Mrs. Ryan C. Fulton
Dr. Roman Gafiteanu
Mr. Chad M. Gorman &
Mrs. Heather C. Lubeck
Mr. & Mrs. Michael B. Gorman
Professor Margaret Howard
Mr. George S. Hugh &
Ms. Ann E. Leininger
Dr. & Mrs. Robert A. Jarrow
Mr. & Mrs. Geoffrey S. Keith
Professor & Mrs. Allen C. Kelley
Mr. Thomas S. Kenan III
Mr. & Mrs. John Koskinen
Mr. & Mrs. James E. Ladd

Mr. Shuit-Tong Lee
Bill LeFevre & Polly Nash
Dr. & Mrs. Richard L. Leff
Mr. W. Curtis Livingston III
Ms. Donna Louizides &
Mr. Jay Venkatesan
Mr. & Mrs. L. T. Matthews, Jr.
Mrs. Mavis M. Mayer
Ms. Sarah B. Maxwell &
Mr. Marc T. Smith
Dr. & Mrs. William McClatchey
Mr. & Mrs. Aubrey McClendon
Mr. T. Bragg McLeod
Dr. & Mrs. James A. McMillin
Dr. & Mrs. Robert B. Meyer
Mr. David A. Michaels
Mr. Matthew W. Mitchell
Dr. & Mrs. Blaine S. Nashold, Jr.
Mr. Paul S. Nesline
Mr. & Mrs. Thomas A. Newby, Jr.
Dr. & Mrs. Edwin H. Page, Jr.
Ms. Louise M. Pariser
Mr. & Mrs. Kim Payne
Drs. Doren M. & Sheldon R. Pinnell
Mr. & Mrs. Robert M. Price, Jr.
Mr. John V. Quackenbush
Mr. & Mrs. Renny Randolph
Mr. & Mrs. Ralph P. Rogers, Jr.
Drs. Mary P. & Robert A. Ruggiero, Jr.
Ms. Cheryl C. Sanford &
Dean Richard A. Danner
Mr. James D. Sink, Jr.
Ms. Erika L. Smith
Ms. Susan Lee Spiller
Mrs. King-Ning Tu
Mr. Bertrand C. Welch
Mr. & Mrs. Scott T. Welsh
Ms. Sterly Lebey Wilder
Mrs. Amy McDaniel Williams &
Mr. Steven R. Williams
Mr. Kemp Bowling Wills
Mr. W. Charles Witzleben
Drs. Shaofeng Yu & Baifei Zeng
Ms. Sara B. Zablotney &
Mr. Matthew Solum

Terraces Society

\$250-\$999

Mr. Michael Abbinante
Mrs. Judith H. Agnew
Mr. Jon Mark Allingham
Mr. & Mrs. Alvin V. Alsobrook
Mr. & Mrs. Billy C. Anderson
Mrs. Marilyn G. Anderson
Dr. & Mrs. Robert W. Anderson
Mr. & Mrs. Andrew V. Asaro
Mr. Gregory Christopher Baecher

Ms. Suzanne Bagert
Mr. Azim Barodawala
Mr. & Mrs. James R. Bauer
Ms. Whitney I. Beckett
Dr. Peter B. Bennett
Ms. Dana Parker Bennisson
Mr. & Mrs. William D. Bennisson
Mr. Thomas M. Berte
Mrs. Bobby Mitchell Biddle
Mr. & Mrs. Garry Blake-Adams
Mr. Wade Hamilton Boggs
Mrs. Patricia Lee Bowman
Ms. Patricia P. Bradley
Mr. & Mrs. James R. Brigham
Mr. & Mrs. Tom Brogan
Mr. & Mrs. J. Paschal Brooks III
Mr. Jackson B. Browning, Jr.
Mr. & Mrs. Edwin C. Bryson, Jr.
Mr. & Mrs. James Allen Byerly, Jr.
Mrs. Margaret C. Caughman
Mr. Eric B. Childs
Mrs. Debra D. Church
Mr. & Mrs. Anthony W. Clark
Dr. Benjamin C. Clark, Jr.
Mr. & Mrs. Donald Cleaver
Mr. & Mrs. Matt Cloues
Mr. & Mrs. George H. Cornelson III
Mr. Curtis Howard Cost
Mr. David F. Couch, Sara & Andy
Mr. & Mrs. Edward D. Cowell, Jr.
Mr. & Mrs. Ernest C. Davenport, Jr.
Mrs. Monica D. DelCampo
Dr. Douglas M. DeLong &
Ms. Lynne E. Marsh
Mr. & Mrs. James B. Duke II
Mr. & Mrs. Charles A. Dukes, Jr.
Dr. Steven D. Edbril
Dr. & Mrs. Daryl C. Emery
Mr. & Mrs. James W. Farlow
Mr. & Mrs. Phil Febbo
Dr. & Mrs. Donald J. Fluke
Mrs. Susan V. Fountain
Dr. & Mrs. Eugene B. Freid
Mr. John Matthew Gagliardi III
Mr. & Mrs. C. Perry Gaston III
Mr. & Mrs. Gary W. Geck
Mr. & Mrs. Nicholas Robert Gelber
Dr. James M. Gill II &
Ms. Anne R. Kelley
Dr. & Mrs. Claude C. Gravatt, Jr.
Ms. Karin Grzanek
Mr. & Mrs. Edwin L. Gulati-Partee
Mrs. Marcia A. Hagee
Mr. & Mrs. T.R. Hainline, Jr.
Mr. & Mrs. J. Samuel Hammond
Mr. Douglas A. Hardy
Dr. Kathryn M. Hargrove
Drs. Merel H. & Ernestine F. Harmel

Mrs. Jacqueline H. Harper
Drs. David T. & Lisa K. Harrington
Mrs. Susan T. Harris
Lieutenant Kareen Hart &
Mr. George Hart
Ms. Lisa Brecker Hartstein
Ms. Kristen P. Hesby
Ms. Barbara A. Hiaasen
Mr. & Mrs. Robbin L. Higby
Rev. Martha J. Horne &
Dr. McDonald K. Horne III
Mr. & Mrs. William C. Hufford
Mr. & Mrs. Kevin F. Hull
Mrs. Amanda G. Huttenlocher
Ms. Karla Mae Jacobus
Ms. Charlotte M. Johnson
Mr. & Mrs. Robert A. Johnson
Dr. & Mrs. Robert G. Johnson
Mr. & Mrs. C. Ray Jones
Mr. & Mrs. Paul D. Jones
Mr. Subhash M. Joshi
Mr. & Mrs. Randolph V. Keeney
Mr. & Mrs. Aric J. Keller
Mr. & Mrs. Robert G. Keller
Dr. Herbert D. Kerman
Mr. Jefferson W. Kirby
Ms. Maggie C. Kirk
Mr. & Mrs. William A. Kirkland, Jr.
Mr. & Mrs. Lee J. Kolosna
Dr. Laura E. Krister
Mr. & Mrs. Kevin D. Kuchinski
Mr. & Mrs. Erick W. Larson II
Mr. & Mrs. Jonathan Levy
Dr. & Mrs. Richard Z. Lipsky
Mr. & Mrs. David M. Logeman
Mr. & Mrs. Joseph M. Luchetski
Mr. & Mrs. David P. Lyons
Mrs. Nancy Smith Marks
Mr. & Mrs. James K. Mason
Mr. & Mrs. George McGlaughlin
Mr. & Mrs. James O. McIntosh
Mr. Fred McIntyre, Jr.
Ms. Rebecca I. McKee
Mr. & Mrs. Robert W. McWaters
Ms. Lavonne Adele Meads
Mr. & Mrs. Walter C. Metz, Jr.
Dr. Christopher L. Meyer
Mr. Gabriel A. Meyer
Mr. & Mrs. Jonathan S. Meyer
Mr. & Mrs. Robert T. Molinet
Mr. Robert D. Monyak
Mr. & Mrs. David D. Mooberry
Mrs. Alice W. Mumford &
Mr. Jerry McDaniel
Mr. & Mrs. Larry W. Nicholson
Mr. & Mrs. Michael D. Nogan
Mr. & Mrs. Wade H. Penny, Jr.
Professor Jane Perry-Camp &
Mr. Harold A. Schiffman

Mr. & Mrs. Benjamin A. Powell
 Mr. & Mrs. Lamont D. Powell
 Mr. & Mrs. Jefferson B. Prather
 Ms. L. Ashleigh Price
 Mr. & Mrs. Robert D. Rabb
 Mr. & Mrs. John M. Raveret
 Mr. & Mrs. C. Richard Reese
 Mr. Christopher R. Reese
 Mr. & Mrs. David B. Ridley
 Dr. & Mrs. Steven F. Roark
 Mrs. Sima F. Robbins
 Ms. Theo J. Roddy
 Mr. & Mrs. D. Bruce Rubidge
 Dr. & Mrs. John H. Sadler
 Dr. & Mrs. Steven Alan Samuel
 Ms. Annette B. Satterfield
 Mr. & Mrs. Edward G. Schreiber
 Mr. Christian Alexander Schwarz
 Mr. & Mrs. Frank Ernest Sheeder III
 Mr. Steven Robert Sherman
 Dr. & Mrs. Donald Silver
 Ms. Amy C. Simes
 Mr. Robert T. Simpson
 Dr. Fred G. Smith &
 Mrs. Barbara Strohbehn
 Mrs. Kathleen W. Smith
 Mr. & Mrs. Michael R. Smith
 Mr. & Mrs. Mel Snyder
 Mr. & Mrs. William F. Sprinkel
 Dr. & Mrs. William M. Spruill
 Mr. & Mrs. James L. Srodes
 Mr. & Mrs. Colin B. Starks
 Mr. & Mrs. Eric Steinhouse
 Dr. & Mrs. Banks Talley
 Dr. William J. Taylor, Jr.
 Ms. Irka K. Templeton &
 Mr. Ryan C. Welsh
 Mr. & Mrs. William D. Thomas
 Ms. Ingrid Han-Yu Tsong
 Mr. Robert Ulmer
 Mrs. Katherine H. Walden
 Dr. & Mrs. Paul P. Wang
 Ms. Mary G. Ward
 Mr. Frederick L. Wenham III
 Mrs. Evelyn Wherrett
 Dr. & Mrs. Richard A. White
 Dr. & Mrs. James Wilde
 Dr. Alma Lorraine Woodyard
 Mr. & Mrs. John R. Yanuklis
 Mr. & Mrs. Merrill A. Yavinsky
 Dr. & Mrs. James W. Young

Groundbreakers Society

\$50-\$249

Mr. & Mrs. Zachary Abella
 Dr. Rosalind S. Abram
 Dr. & Mrs. Marc J. Abrams
 Ms. Donna C. Adair
 Mrs. Karen Adams
 Ms. Kristen L. Aldebol
 Ms. Ingrid S. Allen
 Ms. Erin R. Allingham
 Ms. Barbara Alice Amen
 Ms. Heather A. Anderson
 Mr. & Mrs. W. Holt Anderson II
 Drs. Nancy & Banks Anderson, Jr.
 Dr. & Mrs. Mark D. Andrews
 Dr. & Mrs. David C. Angell
 Mr. & Mrs. Robert T. Anger, Jr.
 Mr. Michael J. M. Arichea
 Ms. Robin Armstrong
 Mr. James M. Arnold
 Mr. Stephen W. Ash
 Mrs. Bert M. Atkinson
 Mrs. Cookie C. Baker
 Drs. Andrew Balber & Frances Kerr
 Mr. & Mrs. Mark E. Baldwin
 Ms. Carol Y. Ballard
 Mr. John Richard Banks, Jr.
 Commander & Mrs. Albert Barco
 Ms. Susan P. Barnes
 Mrs. Hugh D. Barnett
 Mr. & Mrs. Donald W. Barry
 Dr. Nicholas M. Bath
 Mr. Subhash K. Batra
 Dr. Margaret Marshburn Beahrs
 Ms. Louise S. Beasley
 Mr. & Mrs. Dan E. Beauchamp
 Ms. Carolyn Behrend
 Mrs. Eva M. Beischer
 Professor Adrian Bejan
 Dr. Jane S. Bellet
 Ms. Elizabeth Belo
 Ms. Janet W. Bennett
 Dr. Alexandra F. Bentley &
 Mr. Andrew J. Bentley
 Mr. & Mrs. Hu A. Benton
 Ms. Jan Beresford
 Mr. Brian M. Berger
 Mr. & Mrs. Jack W. Bergstrom
 Dr. Helga Bessent
 Ms. Jennifer Biggs &
 Mr. Jeremy Hushon
 Mrs. Dolores Bilangi
 Mrs. Martha McGowan Black
 Ms. Kimberly Bobrosky
 Dr. Stephen Bogdewic &
 Ms. Elizabeth A. Lee
 Ms. Anne L. Bolgert

Mr. Kenneth J. Bolich
 Dr. Nancy J. Bolinger
 Ms. Donna Bong
 Ms. Rosemary Bornes
 Dr. Leslie M. Borsett-Kanter &
 Mr. Steven L. Kanter
 Mr. & Mrs. Robert Bowerman
 Ms. Lee Bowers
 Mr. & Mrs. Robert S. Bowers
 Ms. Christina Bowman
 Mr. & Mrs. William Boyarsky
 Ms. Barbara V. Braatz
 Dr. & Mrs. Robert G. Brame
 Mr. & Mrs. Anthony M. Brannon
 Ms. Barbara Branson
 Mr. & Mrs. Jack R. Braun
 Mr. Berto Brauns
 Mrs. Elizabeth H. Briner
 Ms. Jennings Brody
 Ms. Robin M. Brody
 Ms. Mary Brogden
 Ms. Caroline S. Brown
 Ms. Carrie M. Brown
 Mr. & Mrs. Donald H. Brown
 Ms. Mary Ann Brown
 Mr. & Mrs. Thomas A. Brubaker
 Dr. Nicole C. Brummer
 Mr. & Mrs. Philippe Brun
 Ms. Betty C. Brunson
 Ms. Pat Brusa
 Ms. Cynthia Buckingham
 Mrs. Jane H. Bultman &
 Mr. Frederic G. Dalldorf
 Ms. Joyce Carver Bumann
 Mr. Gus Burnett
 Mrs. W. Gordon Burnett
 Ms. Karen Burns
 Ms. Barbara Busse
 Mr. Fred Butler
 Mr. Nicholas Butterfield
 Ms. Bonnie Bycoff
 Mr. & Mrs. David Z. Bynum
 Mr. & Mrs. George W. Byrne, Jr.
 Dr. Miriam L. Cameron
 Dr. & Mrs. Bruce R. Campell
 Mr. & Mrs. Andrew T. Canada, Jr.
 Ms. Cari B. Cannon
 Mr. & Mrs. Steve A. Cantu
 Mr. Matthew Carter
 Ms. Hilary Caso
 Dr. & Mrs. William F. Chambers
 Mr. & Mrs. J. Smith Chaney
 Mr. & Mrs. Michael T. Chaney
 Mr. Jeremy A. Chapman
 Mr. & Mrs. William D. Charping
 Mr. & Mrs. Dennis R. Chen
 Mr. Lester Hao-Lin Chen
 Mr. Robert Cherry
 Mr. David Chi

Professor & Mrs. George C. Christie
 Ms. Brooke M. Church
 Mr. Phillip Ciampini
 Dr. & Mrs. James R. Clapp
 Dr. Lorraine H. Clark &
 Mr. James H. Pickering *
 Mr. & Mrs. George R. Clarke, Jr.
 Mr. Daniel Carl Claster
 Dr. Jane Clayton
 Ms. Martha Cox Cleary
 Mr. & Mrs. Andre Clemandot, Jr.
 Mr. & Mrs. Gary L. Clinton
 Ms. Margaret A. Cloud
 Mr. & Mrs. Steve Clyburn
 Mr. & Mrs. Arthur G. Cobleigh, Jr.
 Mr. Paul L. Cohen
 Dr. Rhonda S. Cohen &
 Mr. Jay Cunningham
 Mr. Aaron Edward Cohn
 Colonel & Mrs. John R. Cohn
 Mrs. Charity Cole
 Ms. Carol Coley &
 Mr. Matthew Libby
 Ms. Elizabeth Collins
 Mrs. Barbara J. Colvin
 Ms. Helen Compton
 Ms. Meredith L. Conduct
 Drs. Eddie G. & Roberta L. Cone
 Mr. Ryan N. Confer
 Mrs. Lauren M. Connolly
 Miss Jan R. Cook
 Ms. Margot H. Cook
 Ms. Christine M. Cooney
 Mrs. Ann Weaver Copland
 Ms. Jeannette W. Coplin
 Ms. Elizabeth A. Corcillo
 Dr. & Mrs. Peter G. Cordiero
 Mrs. Connie Cottingham
 Mr. David Charles Coughenour
 Mr. & Mrs. James I. Coughlin
 Mr. & Mrs. James P. Cox
 Mr. & Mrs. Thomas L. Cox
 Ms. Monica L. Craig
 Mr. & Mrs. Carlyle C. Craven
 Drs. Donna E. & Wilson Crone
 Mr. & Mrs. Frederick S. Crook
 Ms. Kimberly Crooks
 Ms. Anna L. Crooms
 Ms. Catherine L. Crowder
 Ms. Julie H. Cubeta
 Mr. Kurt H. Cumiskey &
 Ms. Linda K. Varosi
 Ms. Sandra S. Curlee
 Mr. & Mrs. David P. Currey
 Mr. Derek Cyr
 Mr. Michael W. Dale
 Mr. & Mrs. Thomas A. Dalgleish
 Mr. Steven D. Danforth

* deceased

Mr. & Mrs. A. Barry Dark
Mrs. Ann Woodall Davant
Rev. & Mrs. Claude V. Deal
Mr. & Mrs. James A. Dean
Mr. & Mrs. Adam Walter Decker
Mr. & Mrs. Eddie Dennis
Ms. Yvonne E. Desmet
Mr. Judd Devault
Mr. & Mrs. Bill Dickerson
Mrs. Patricia S. Dickinson
Mr. Todd W. Dickinson
Ms. Jean Diffenderfer
Mr. & Mrs. Eric S. Dobbins
Mrs. Patricia L. Dolby
Ms. Sarah H. Domingos
Ms. Janet Donahue
Mr. Jonathan A. Donahue
Majors Patrick & Michelle Donahue
Mr. & Mrs. John H. Dorminy IV
Mr. Justin L. Doull
Mr. Michael A. Douglass
Dr. Earl H. Dowell
Ms. Dorothy Doyle
Mrs. Susan A. Doyle
Mr. & Mrs. Richard N. Drake
Mr. Michael L. Draper
Mr. Cormac S. Drumm
Ms. Stephanie Ruth Dubois
Ms. Ann F. Dudley
Dr. & Mrs. Charles R. Duke
Mr. Thomas R. Dunson
Mrs. Fay Danner Dupuis
Mr. Timothy J. Durman
Ms. Carol Dusetzina
Ms. Christine E. Dyott
Ms. Gale Ebert
Ms. Cynthia Eckroth
Ms. Peri R. Edelstein
Reverend & Mrs. Carl N. Edwards
Dr. Paula J. Ehrlich &
 Mr. Richard C. Copsey
Ms. Barbara D. Eldredge
Mr. & Mrs. David H. Elebash
Mr. & Mrs. Robert L. Elkins
Ms. DeRonda Elliott
Drs. Jeremy & Linda Ellis
Ms. Jill A. Ellis
Mr. & Mrs. Allen M. Ende
Ms. Nancy L. Espersen
Dr. Mary W. Eubanks
Mrs. Susan Duncan Eure
Ms. Ellen Ewart
Ms. Janice Eyer
Ms. Joline Ezzell
Ms. Jacquelyn M. Fahey
Ms. Gabrielle C. Falk
Mr. John Farrell
Ms. Margaret L. Farrell

Dr. Mark N. Feinglos
Drs. David H. Feldman &
 Susan M. Lontkowski
Ms. Lori Fendell
Dr. Mark M. Fernandez
Ms. Sarah Fish
Ms. Ryland Fishel
Mr. & Mrs. Brian G. Fisher
Ms. Sandra K. Fisk
Mr. & Mrs. Peter W. Flur
Ms. Anne C. Fogg
Mr. & Mrs. Dennis Richard Foley
Ms. Nancy E. Ford
Ms. Jessica A. Fore
Ms. Holly Francis
Mrs. Helen C. Franklin
Dr. & Mrs. W. D. Frazer
Mr. David W. French
Dr. Donna Frick
Ms. Elizabeth B. Fryar
Mr. & Mrs. Stephen R. Fuss
Dr. Richard K. Gaillard, Jr.
Dr. Kim Gans-DeLuca &
 Mr. Steven J. DeLuca
Mrs. Annabel Garrett
Ms. Lauren C. Genvert
Drs. Kathleen & Thomas Gerbasi
Mr. & Mrs. David F. Gettles
Mr. & Mrs. Tim Gillam
Dr. & Mrs. Peter W. Gilmer
Mr. & Mrs. John A. Glaccum
Ms. Ethel G. Gluck
Dr. Richard D. Goldner &
 Ms. N. Carrick Glenn
Ms. Shannon Glutting
Mr. & Mrs. Gordon Goeking
Mr. Joshua James Goldstein
Mr. & Mrs. Jason Wells Goode
Mr. Nathaniel Goodman
Ms. Anne Goodrich
Ms. Ethel C. Gorsuch
Ms. Anita Grant
Ms. Leslie A. Graves &
 Mr. John T. Fucigna
Ms. Anne Woody Gray
Mr. David J. Green
Mr. & Mrs. Edwin F. Gregory
Dr. Joel Scott Grossman
Mrs. Carol Gunther-Mohr &
 Mr. Robert Markunas
Mr. John S. Hahn
Ms. Jennifer Hainsfurther &
 Mr. Craig Saperstein
Mr. & Mrs. James V. M. Hale
Ms. Dedra Hall
Ms. Patricia E. Haman &
 Mr. Oakley K. Vincent
Mr. Jeffrey Alan Hamburg

Mr. & Mrs. James T. Hamilton
Rear Adm. & Mrs. Charles S. Hamilton II
Drs. Brian G. & Linda J. Hanessian
Mr. Thomas F. Harkins
Mr. John W. Harris
Ms. Maureen Harris
Mrs. Barbara Harvey &
 Mr. Keith Jensen
Colonel & Mrs. Tom Harville
Mr. & Mrs. Jon M. Hays
Ms. Inga Headrick
Mr. Robert Heasty, Jr.
Mrs. Donna Werner Hecker
Mrs. Patricia M. Hege
Mrs. Robert J. Heiman
Mr. & Mrs. Donald Heineman
Mr. & Mrs. Richard Hemming
Mr. Bradley E. Henderson
The Hon. Karen Le Craft Henderson
Mr. & Mrs. William R. Henshaw
Mr. & Mrs. Gordon B. Herbert
Mrs. Eve Meyers Herman
Ms. Susan Hester
Ms. Katherine L. Higgins
Mrs. Lucinda P. Hill
Mr. Stephen M. Hillis
Mr. Donald B. Hirsch
Drs. Margaret & Richard Hodel
Ms. Regan E. Hodina
Mrs. John R. Hoehl
Drs. Carol Hogue & Gordon DeFries
Mrs. Ravinder G. Holder
Ms. Joanne M. Holdren
Mr. James Holloway
Ms. Carol J. Holman
Mr. & Mrs. Edwin Holt
Mr. & Mrs. James R. Horner
Mr. & Mrs. Robert Houghtlin, Jr.
Mr. & Mrs. Larry Howard
Ms. Eleanor Jo H. Howren
Mrs. Elaine Y. Hsieh &
 Mr. Ryan P. McCormack
Mr. & Mrs. Robert B. Huey
Mr. S. Scott Hughes
Mr. Matthew C. Hunter
Drs. Jennifer M. & Peter S. Hyde
Mr. John C. Hyde III
Ms. Carolyn H. Ikenberry
Ms. Ann Ross Isley
Ms. Susan S. Ittner
Dr. Emma M. Jakoi &
 Mr. Lazlo Jakoi
Ms. Heather Jarro
Mr. Peter Jeffries
Mr. Harry P. Jenkins
Ms. Marissa R. Jenkins
Mr. Carroll L. Joachimi, Jr.
Ms. Anita M. Johnson

Mr. & Mrs. Bob Johnson
Mr. & Mrs. Joseph Johnson
Ms. Kennita Johnson
Mrs. Melissa R. Johnson
Mr. & Mrs. Marshall G. Jones
Dr. & Mrs. Evan L. Jones
Mr. & Mrs. Efrain Jove
Mr. Scott M. Jove
Mr. Leonard Macon Kamsler
Mr. Anthony C. Kang
Mr. Jeffrey Kanters
Mrs. Dian S. Kaye
Mrs. Mollie H. Keel
Mr. & Mrs. John N. Keller
Mr. & Mrs. James M. Kellogg
Ms. Kitty Lee Kemp
Mrs. Betty P. Kenan
Mr. Charles Kidder
Mr. Jung Mook Kim
Ms. Yu Jin Kim
Ms. Nancy J. Kimmerle
Mrs. Machel W. Kimrey
Ms. Margaret K. Kimzey
Mr. & Mrs. Charles M. King, Jr.
Mr. David C. Kirk
Drs. Rebecca & John Kirkland III
Dr. Caroline Mary Klein
Mr. Dan Klein
Mr. & Mrs. David Kneeburg
Dr. & Mrs. Kenneth R. Knoerr
Mr. Paul T. Koepke
Mr. & Mrs. Brian F. Kogut
Mr. & Mrs. Dick Kosempa
Mr. Robert M. Koslow
Mr. Mark D. Krasniewski
Mr. & Mrs. Thomas H. Kraus
Ms. Alicia Thumas
Mr. & Mrs. David C. Kwee
Mr. Nicholas Kyriazi
Dr. Emily B. Lacina
Mrs. Betty L. Lacy
Mr. & Mrs. Stanford G. Ladner
Ms. Katherine M. LaFiura
Ms. Lindsay Lambe
Mrs. Bernice S. Larson
Mr. & Mrs. John F. LaSalle III
Mr. & Mrs. Scott D. Laufer
Dr. & Mrs. Uri Lavy
Dr. Patrice P. LeClerc
Mr. & Mrs. David Leith
Mrs. Siri S. Leong
Ms. Victoria Leontieva
Mr. & Mrs. Drew Leslie
Ms. Sarah Amanda Lesueur
Mr. Daniel E. Librot
Mr. & Mrs. Barry M. Lichman
Mr. & Mrs. Ned D. Light
Mr. Frank G. Light

Mrs. Joellen M. Liles
Mr. Charles S. Lin
Mr. & Mrs. Kenneth Lineberger, Jr.
Mr. J. Andrew Lippincott
Mr. & Mrs. John M. Livingood
Ms. Irene Lofstrom &
Mr. Stephen Coombs
Ms. Mary Logue
Mr. Daniel J. Lonon
Dr. & Mrs. John G. Looney
Mr. & Mrs. Charles B. Looper
Mr. & Mrs. Alex J. Lopez
Ms. Jeanne G. Lorio
Mr. & Mrs. James R. Loudon
Dr. Michael D. Loven
Mr. & Mrs. William R. Lucas
Dr. Scott David Lurie
Ms. Barbara Lyon &
Mr. Steve Palley
Mr. & Mrs. Bruce MacDonald
Ms. Linda W. Mace
Mrs. Rita L. Magas
Ms. Marjorie Maitland
Miss Sally F. Malkasian
Mrs. Tracy Mancini
Mrs. Rosalie S. Mandel
Mr. & Mrs. Larry Mandelkehr
Mr. Reuben J. Manning
Mr. Edward Marcus Marsh III
Mrs. CoraLynn H. Marshall
Mr. & Mrs. Cade M. Martin
Mrs. Peggy Orr Mason
Mr. Philip G. Massey
Ms. Carole A. Mathison
Mr. & Mrs. James C. Mau
Ms. Suzanne Maupin
Dr. & Mrs. Norman Mauroner, Jr.
Mr. John W. Mays
Ms. Joanne Mazula
Mr. William Steven McArthur
Mr. & Mrs. Todd L. McCallister
Dr. & Mrs. Richard McCann
Dr. & Mrs. Jackson McCarter
Ms. Susan McClanahan
Ms. Nancy C. McCormick &
Mr. Nathan M. Crystal
Mr. & Mrs. Clifton L. McCotter, Jr.
Ms. Amanda L. McCoy
Ms. Doris C. McCoy
Dr. & Mrs. Ralph C. McCoy III
Dr. & Mrs. Joseph McCracken
Dr. & Mrs. Dean E. McCumber
Dr. William McCune &
Dr. Georgiana Sanders
Mr. & Mrs. Thomas McCurdy
Mr. Ralph McDonald &
Mrs. Margaret McLaurin

Ms. Joan McFather
Mrs. Janet McGough-Csarny &
Mr. Richard J. Csarny *
Mrs. Kathy McGrath
Mr. Thomas B. McGuire, Jr. &
Ms. Josephine E. Powe
Ms. Barbara McKenzie
Ms. Julie M. McLaurin
Mr. & Mrs. J. Newton McQuay
Ms. Bonnie McWilliams
Ms. Bonnie Medinger
Ms. Danielle R. Mehlhorn
Ms. Paula Messac
Mr. Brian R. Mestan
Mr. & Mrs. Christopher Meyer
Mrs. Ann Milam
Mr. Derek Miller
Dr. Mary Ruth Miller
Mrs. Pat Miller
Ms. Shelly Miller
Ms. Eleanor Mills
Mrs. Norma M. Milner
Mr. & Mrs. James R. Minicozzi
Dr. Alexander Miron
Mr. Jerald D. Mize
Mr. & Mrs. Victor B. Moore
Dr. & Mrs. Raul Joaquin Moreno
Dr. & Mrs. Dean Morgan
Ms. Miharu Morimoto
Mr. Daniel A. Moros &
Ms. Ann W. Schongalla
Mr. & Mrs. Michael J. Morsberger
Mr. & Mrs. Parker Morton
Ms. Katherine C. Moses &
Mr. Kenneth Soo
Mrs. Elizabeth Mottern
Ms. Judy L. Mulcrone
Mr. Marc R. Munfa
Drs. Christine B. & Thomas L. Murray, Jr.
Ms. Gerrie Murray
Mrs. Patricia B. Musgrove
Ms. Mary Jo Muzzey
Mrs. Nancy H. Myers
Mrs. Patricia B. Naftel
Mr. Robert R. Nagle
Mr. Michael J. Nagy
Dr. Rebeccah K. Neff &
Mr. Harry M. Neff
Ms. Nancy Newark
Ms. Ellen Newby
Dr. & Mrs. Bruce Newell
Mr. & Mrs. Paul Raymond Newman
Mrs. Pamela S. Newsome
Mr. & Mrs. B.B. Nicholson, Jr.
Ms. Sonja M. Nielsen
Dr. Maria Niswonger &
Mr. Wilfred Wollheim

Ms. Marilyn Noble
Ms. Flora C. O'Brien
Mr. Gary F. Ocheltree
Ms. Kimberly J. Ocheltree
Mrs. Ashley P. O'Connor
Ms. Shirin Odar &
Mr. Theodore Payne
Ms. Pam Odom
Mr. & Mrs. Billy B. Olive
Dr. Angela & Mr. Michael O'Rand
Mr. Jerry Oster &
Ms. Trisha Lester
Mr. & Mrs. Richard C. Page
Mrs. Lori-Ann Palen
Mr. Drew Swanson Palmer
Ms. Gwen Palmer
Mr. & Mrs. Robert Palmer
Mr. Daniel Palubniak
Dr. Sarah & Mr. Andrew Parker
Ms. Virginia Lea Parker
Mrs. Gayle H. Peacock-Shaffer
Mr. Craig Peckham &
Ms. Elizabeth Wyatt
Mrs. Mary H. Peete
Ms. Joan M. Pellettier &
Mr. Michael G. Scott
Ms. April Pelton
Ms. Patra W. Peng
Ms. Martha S. Penny
Miss Anne E. Peret
Mr. Nicholas A. Perez-Stable IV
Dr. Ronald D. Perkins
Ms. Amy Peters
Drs. Dwight N. & Margaret K. Peterson
Mr. & Mrs. Edmund Bines Pettiss, Jr.
Ms. Jennifer Phillips
Mrs. Julia P. Philyaw
Mr. & Mrs. Jason B. Piche
Mr. & Mrs. David A. Pickel
Mr. & Mrs. Gregory A. Pierce
Mr. Mark J. Pierce
Mr. & Mrs. Malcolm Pinkston
Mr. & Mrs. Kyle Pittman
Mr. David P. Plandowski
Ms. Alice L. Pohlmann
Dr. & Mrs. Claibourne W. Poindexter
Ms. Capie A. Polk &
Mr. Jesse Lee Bailey
Dr. Calvin A. Pope
Dr. & Mrs. James Lewis Porile
Mr. & Mrs. Bill Powell
Mr. Richard J. Powell
Mr. & Mrs. William F. Powers, Jr.
Dr. & Mrs. Jack J. Preiss
Ms. Katherine Preston &
Mr. Robert Anderson IV

Mr. & Mrs. A. Barney Price
Mr. & Mrs. Robert R. Pries
Ms. L. Suzanne Pritchard
Ms. Sarah E. Prosser &
Mr. Sean D. Green
Mr. Walter H. Puckett Jr.
Mr. & Mrs. Reuben M. Rainey
Mr. & Mrs. Joseph C. Ramage
Ms. Barbara L. Randolph-Anderson
Ms. Elizabeth C. Raymond
Mrs. Cynthia S. Reardon
Mr. Lannie Reardon
Ms. Cordelia Redenbaugh
Mr. David A. Reed
Mr. Joe C. Rees
Ms. Nancy Reise
Mr. Jason K. Rice
Ms. Janet S. Richmond
Mr. Jonathan H. Rick
Mrs. Janice E. Rideout
Ms. Alana Kristine Ridge
Ms. Betsy Riley
Mr. & Mrs. Cory D. Rind
Miss Virginia I. Ritchie
Ms. Natasha D. Ritsema
Dr. Carolyn C. Rizza
Mrs. Katherine D. Robbins
Ms. Sylvianne Roberge
Mr. & Mrs. William A. Roberts
Ms. Elizabeth A. Robertson
Mr. John Robinson
Ms. Beverly S. Rodgers
Dr. & Mrs. John P. Rodgers
Mr. Michael J. Rogan
Mr. Alfonso E. Romero
Dr. Kimerly Rorschach &
Mr. John F. Hart
Mrs. Betty Rosch
Ms. Susan Rosefield
Ms. Sandra D. Roznovsky
Dr. Judith L. Ruderman
Mr. Preslee Rudisill, Jr.
Mrs. Mary A. Ruegg
Ms. Lisa W. Ruizsparza
Mrs. Marlene S. Runte
Ms. Tracy Lynn Rupp
Mrs. Raymond Z. Russell
Mr. & Mrs. Bruce Jay Ruzinsky
Mrs. Carol K. Sackett
Mr. Sol Salvin
Mr. Edward B. Samuel
Ms. Teresa Samulski
Major & Mrs. Richard H. Sandelin
Mr. & Mrs. Craig J. Saperstein
Mr. Mohammad Sarhan
Mr. Richard H. Sauer, Jr.

* deceased

Ms. Cynthia E. Savage
Mr. Robert P. Savery
Ms. Angela Scarlett
Mr. & Mrs. Henry H. Scherich
Ms. Jan Schochet
Mrs. Beta Schroder
Mr. Derek Kingsley Schubert
Ms. Janet R. Schulz
Ms. Jamie Schumaker
Ms. Stephanie Lynn Schumann
Dr. Bernadette F. Scott
Ms. Patricia C. Scott
Dr. Richard L. Scott II
Dr. Deborah A. Schwengel
Mr. & Mrs. Daniel P. Seeburg
Ms. Rita Selmont
Mr. & Mrs. Truman T. Semans
Mr. & Mrs. Thomas E. Senf
Mr. & Mrs. Daniel F. Settle
Mr. & Mrs. Lee F. Seybert
Ms. Judith R. Shapiro
Ms. Karin A. Shapiro
Mr. & Mrs. John D. Sharp
Ms. Toni C. Shaw
Mrs. Jerry Sheehy
Mr. Worth B. Shelton
Ms. Cynthia L. Shimer &
Mr. Eric N. Wiebe
Ms. Laura L. Shinkan
Mr. Tony E. Shipman
Miss Ella Shore
Dr. Munira D. Siddiqui
Mr. & Mrs. Karl F. Siebrecht
Mr. D. Neal Sigmon
Mr. & Mrs. Daniel R. Silver
Mr. & Mrs. Erik R. Simpson
Mr. & Mrs. William J. Sims
Dr. Bethany S. Sinnott
Ms. Diane Marilyn Sinski
Mr. & Mrs. Jos Sisk-Purvis
Mr. & Mrs. Andrew W. Skelton
Mr. Chris B. Slaughter
Ms. Lindsay Smith
Dr. Nicole D. Smith
Ms. Virginia S. Smith
Mr. & Mrs. H. Gilbert Smith, Jr.
Ms. Tommie S. Smith
Dr. & Mrs. Whitman E. Smith, Jr.
Dr. Wallace C. Snipes
Mr. Kevin Snow
Mr. & Mrs. William T. Snow, Jr.
Mr. & Mrs. Robert Snyder
Mr. Mark A. Sorensen
Ms. Dorothy A. Spangler
Dr. Charlotte M. & Mr. John F. Speltz
Ms. Rody Spivey
Ms. Diane Spitz

Ms. Catherine M. Starkweather &
Mr. Daniel E. Oldman
Ms. Kathryn E. Starns
Mr. & Mrs. Peter Stearns
Mr. Paul M. Orbuch &
Ms. Stacey E. Stern
Ms. Barbara Stevens
Mr. & Mrs. Joseph Gary Stevens, Jr.
Ms. Cheryl A. Stiles
Mrs. Ann M. Stock
Dr. Janice D. Stratton
Ms. Darden E. Straus
Mr. & Mrs. William Strobel
Mr. & Mrs. Elvin E. Strowd
Mr. Robert W. Stubbs
Mr. & Mrs. James E. Suddath
Mr. & Mrs. Jeffrey B. Sumner
Mrs. Kelly Suttles
Mrs. Isabel V. Taylor
Mr. John Taylor
Ms. Carol W. Teig
Mr. Donald E. Teller
Ms. Nancy Templin
Mr. & Mrs. Clarke Thacher III
Mr. & Mrs. David James Thacker
Ms. Sharon L. Thacker
Ms. Pascale M. Thomas
Dr. & Mrs. Isaac C. Thomas
Mr. & Mrs. Robert E. Thornberry
Mr. William H. Thorne, Jr.
Dr. & Mrs. Robert W. Thraikill
Ms. Jennifer Tilden
Mrs. Harriet W. Tindal *
Drs. Edward & Josefina Tiryakian
Dr. & Mrs. Aubrey Granville Tolley
Ms. Amelia Tosti
Ms. Mary B. Touchstone
Mr. & Mrs. Mark A. Traver
Mrs. Marjorie G. Tuck
Ms. Martha T. Tunstall
Dr. & Mrs. William R. Tyor
Ms. Amy K. Upperman
Dr. Elizabeth Van Volkenburgh &
Mr. B. Lippitt, Jr.
Drs. Kevan Vanlandingham &
Debara L. Tucci
Mr. Mitchell Vann &
Mr. Joseph Fedowitz
Mr. & Mrs. Dennis Vick
Mr. Nathan Villaescusa
Ms. Linda Brown Walden
Ms. Julie L. Walker
Mrs. Martha S. Warburton
Mrs. Joan Ward
Ms. Mitchell D. Ward
Dr. & Mrs. Stephen D. Ward
Mr. Christopher Wardell
Dr. Nancy P. Wardropper

Mrs. Jennifer L. Ware
Mr. & Mrs. John K. Warren
Mr. & Mrs. John A. Waterman
Mr. & Mrs. Marvin Waters
Ms. Anna G. Way
Dr. Richard E. Weaver, Jr.
Mr. & Mrs. Joseph C. Webb, Jr.
Mr. & Mrs. Mark H. Webbink
Dr. Karen E. Weck-Taylor
Mr. & Mrs. Wade M. Wells
Mrs. Patricia M. Wells
Dr. Paul Welty, Jr.
Dr. Karen E. Welty-Wolf
Mr. Christopher A. Wensil
Mr. & Mrs. Thomas R. West
Ms. Vail E. Weymann
Dr. Andy Wheeler
Dr. Elizabeth D. & Mr. Stephen B. Whitaker
Mr. Gordon R. Whitehouse
Dr. Arthur W. Whitehurst
Dr. & Mrs. John S. Wiener
Mrs. Abigail T. Wilcox
Dr. Pelham Wilder, Jr.
Ms. Nancy Wildermann
Ms. Cynthia B. Wilkerson
Mr. & Mrs. Roland Wilkins
Ms. Mary Ann Wilkes
Dr. & Mrs. John I. Willard
Mrs. Dorothy S. Williams
Mr. John Turner Williamson
Ms. Anne Lawrence Wilson
Mrs. Gail P. Wilson
Dr. & Mrs. Jack A. Wilson
Mr. & Mrs. Snodie B. Wilson
Ms. Patricia L. Winkler
Dr. Elton Dewitt Winstead
Mr. & Mrs. Andrew B. Woelflein
Mr. & Mrs. Eric Wolin
Mrs. Marie V. Wood
Mrs. Robert V. Wood
Mr. & Mrs. Jake Woods
Mr. & Mrs. George A. Woolley
Mr. Thomas B. Worsham
Ms. Denise Wright
Dr. & Mrs. Paul Wright
Mr. & Mrs. John K. Wyman
Ms. Patricia Yonaitis
Ms. Cary J. Zakrzewski
Mr. Todd Zapolski
Dr. & Mrs. Carl L. Zielonka
Dr. Donald B. Zobel

In addition, we appreciate having received 455 supporting gifts below \$50.

Student Groundbreakers Society

\$15 - \$249 (currently enrolled students)

Christopher E. Bobadilla
Lucas A. Chapin
Alexandra L. Couch
Prisha M. Dass
Sarah P. Doyle
Robert H. Drum
Heather Fildes
Roxanne Flint
William B. Gray
Peter A. Heisler
Jonathan S. Huang
Kimberly Keeney
Ashley J. Lamparello
Colleen McGavin
Lisa Pang
Matthew D. Pilnik
Marisa J. Siegel
Sarah E. Steele
Katherine H. Stiner
Juliana E. Traut
Todd S. Wasson
Eric Spencer Weiss
Jacob P. Wood
Phillip M. Wu

Corporations & Foundations

BIN Charitable Foundation
Business Credit Information, Inc.
DFC Holdings
E.T. Rollins Jr. & Frances P. Rollins Foundation
F. M. Kirby Foundation
Fordham & Company
Kalamazon Minerals Corporation
Krantz Trust
Mary Duke Biddle Foundation
Mary Louise & Maurice W. Grumbles Foundation
National Philanthropic Trust
Oak Foundation
Shepherd Foundation
Sister Cities of Durham, Inc.
Snyder Watchorn Foundation, Inc.
Textron, Inc.
Triangle Community Foundation
Vanguard Charitable Endowment
Witzleben & Associates

Matching Gifts

AstraZeneca
Bank of America Foundation, Corporate Affairs
Barclays Capital
Capital Group Companies Foundation
Church & Dwight Co., Inc.

* deceased

Coca-Cola Company
 Darden Restaurants Foundation
 Deutsche Bank Americas Foundation
 Dominion Foundation
 Fidelity Foundation
 General Reinsurance Corporation
 GlaxoSmithKline Foundation
 Goldman Sachs & Company
 Google
 Jefferies Group, Inc.
 L'Oreal USA Inc.
 Microsoft Corporation
 Occidental Petroleum Charitable Foundation
 Pfizer Foundation
 RBC Capital Markets Corporation
 Ronald McDonald House Charities
 Textron, Inc.
 The Scholarship Foundation
 Wachovia Corporation
 Warburg Pincus Foundation

Garden Clubs

Colony Woods Garden Club
 Daylily Garden Club
 Durham Council of Garden Clubs
 Garden Makers
 Governors Garden Club
 Hillsborough Garden Club
 Pinehurst Garden Club
 Town & Country Garden Club

Horticultural Organizations

New York Botanical Garden
 North Carolina Native Plant Society
 Plant Delights Nursery, Inc.
 Shagreen Nursery & Arboretum
 Specialty Ornamentals

Community Friends

A Perfect Day DJ
 Bella Rose Photography
 Cari Long Photography
 Chris Niemann Photography
 Cinema One Studio
 Dara Blakeley Photography
 Emory Lane, Inc.
 Heather Swanner Photography
 Holly Marie Photography
 Image Mill
 Jacoby Photography
 James P. Cox Photography
 James Ward Photography
 KPO Photo
 Lashelle Chappell Photography

Mark Jacoby Photography
 Michael's Memories
 Mindful Landscapes
 NewImageStudio.com
 Photography by Bob Stuart
 Season Moore Photography
 Studio B Photography
 Penny Noell Photography
 Scott Faber Photography
 Sweet Life Photography

Memorials

Margaret "Peggy" Parsley Adams
 Joyce Albrecht
 Adrienne Arnot WC'70
 Stephenson Pope Babcock
 Edith Barrow
 Robert G. Berry
 Kathryn L. Bong
 Ann Martin Bowen
 Andrew P. Brame
 Susan Pollard Browning WC'71
 James B. Bunting
 Julia Vernon Burris T'86
 Margaret Callander
 Wes Chaffin
 Steven Richard Church F'92
 Richard Todd Colvin
 Bud C. Cowdery
 William Louis Culberson
 Edwin Speight Daniel, Jr.
 Edwin Speight Daniel, Sr.
 Ruby Thompson Daniel
 Florence DiLiberti
 Judith Campbell Drumm WC'44
 Rebecca W. Dukes WC'56
 Mildred D. Durden
 Gladys B. Evans
 V. Anne Flowers G'63
 David Gilbert
 Olga Gilliat
 Ulrich M. Goesele
 Faye Granberry-Hardy
 Ann Alexander Greer WC'56
 Barbara Massa Gurski T'76
 Archie V. Hammond
 Lorice P. Hammond
 Elizabeth R.F. Hart
 James C. Hart
 Sandy Hoke
 Byron H. Johnson F'93
 Wallace Wilford Kale T'43
 Ruth Rice Kerman WC'39
 Dr. Henry E. Kistler, Jr. T'57, M'61
 F. Prentice Lacy
 Thomas A. Langford D'54, G'58

William Leong
 Judith S. Manning
 Charles Markham
 Mary Martin
 Sharon Hammond McAlister
 Marguerite McGrain
 Nora Kathleen Nicholson
 Frances Gray Patton T'26
 Harold Sanford Perry
 Magrid Hagelberg Perry
 Alfred E. Powell
 Sgt. James John Regan T'02
 Sarah Hagler Risley WC'59
 David & Dody Robertson
 Alan W. Rodgers
 Mary Ann H. Schuler WC'61
 Mary Annette Scott
 Frederic M. Senf
 D. Gordon Sharp HS'39
 Rachel H. Sherman T'97
 Edgar Sims, Jr.
 Don Smith
 George A. Smith
 Martha V. Stars
 William K. Stars T'48
 Peggie Stokes
 Wayne Thrailkill
 Francesca Tolbert
 Lynn Holmes Trotter WC'66
 Sally Tuttle
 "Tycho"—loyal friend
 Malcolm Paul Tyor M'46
 Esther Martin Warren
 Marjorie Stallcup Watkins WC'38
 Norman L. Wherrett
 Edward L. Williams T'53
 Martha H. Wilson
 Connie Lucas Winkler WC'59

Honors

Monica D. Arnold
 Douglas W. Bycoff E'09
 Lorne V. Bycoff T'06
 Deborah Chi T'14
 Alexandra L. Couch T'10
 Aaron Church
 Allison Church
 Jack Athanas
 Jane Church
 Yunus Church
 Catherine V. Cordeiro
 Larry T. Daniel
 Renu Dass
 Alice Le Duc
 Rebecca W. Dukes WC'56
 Anne & Bob Durden

Benjamin M. Fink T'89
 Chuck Hemric
 Eva Hoke
 Jason Holmes
 Alice K. Horton
 Paul Jones
 Tamara Kilbane
 Bill LeFevre
 Paige McClanahan G'08
 J. Horst Meyer
 Frances Gray Patton T'26
 Linda Pearl
 John J. Piva, Jr.
 Kate Piva
 Kathy Piva
 Ruth Reynolds
 Mary Semans
 Heather Simoneaux
 Kelly Suttles
 Katie Vogel Stoudemire
 Richard A. White
 Amy Wilkinson
 Mark Wilkinson
 Katherine Wright
 Will Yavinsky T'05
 Durham Academy Class of 2010
 Men's Basketball Team
 Class of 1958 Reunion
 Class of 1959 Reunion
 Class of 1960 Reunion
 Class of 1974 Reunion
 Class of 1984 Reunion
 Class of 1986 Reunion
 Class of 1988 Reunion
 Class of 1989 Reunion
 Class of 1990 Reunion
 Class of 1998 Reunion
 Class of 2004 Reunion
 Class of 2005 Reunion
 Class of 2010 Reunion

Volunteers

Ellen Adams
 Anne Akwari
 Edmund Albrecht
 Taimi Anderson
 Marcia Angle
 Connie Athanas
 Joyce Avery
 Aniela Avery-Jones
 Brian Avery-Jones
 Bob Ayers
 Momoko Baba
 Cookie Baker
 Mary Barron
 Don Barry

Luiza Behrendt
Janice Benjamin
Kristine Bennett
Caroline Bernard
John Blackburn
Jackson Bono
BJ Boyarsky
Rose Boyarsky
Barbara Branson
Betsy Brawley
Katie Brehm
Terry Britton
Cynthia Brodhead
Brenda Brodie
Patricia Brusa
Avonlea Bryant-Comstock
Clarice Bullock
Shirley Burkall
Drew Bush
Janet Carter
Susanna Chabinak-Uhlig
Dick Cicone
Barbara Clark
Charles Clark
Kay Clarke-Keffer
Charity Cole
Susan Concannon
Christopher Crawford
Jonathan Crawford
Shannon Currey
Larry Daniel
Mary Dawson
Helen Dennis
James Dietz
Kathy Dils
Leanna Doty
Gene Downs
Steve Duncan
Evebell Dunham
Margaret Dwane
Cynthia Eckroth
Mary Eubanks
Jacqueline Evans
Tina Falker
Lori Febbo
Samuel Feldblum
Lori Fendell
Richard Fisher
Sandi Fisk
Mary Fling
Carole Foley
Adam Folta
Judith Fortson
Sheryl Fowler
Raquel Francis
Cavett French
Hema Ganapati
Valeria Garcia-Watts

Annabel Garrett
Christopher Garrett
Edna Gaston
Pela Gereffi
Liza Gettles
Victor Gordon
Ethel Gorsuch
Katrina Greely
Marcella Gross
Richard Gross
Joan Guilianelli
Rosalia Gutiérrez-Blanco
Yasamin Haghshenas
Katherine Hale
Mike Hale
Nancy Hamilton
Thomas Harding
Inga Headrick
Karen Heitzenrater
Elizabeth Hemming
Maria Hitt
Christine Hodder
Bobbi Jo Holmes
Benjamin Holt
Alice Horton
Stephenny Houghtlin
Larry Howard
Lu Howard
Susan Howng
Christine Huber
Susan Hudson
Wendell Hull
Andrew Hutzel
Hermes Illana
Ikuko Inoue
Yoko Iwashima
Julie Joblin
Anne Johnson
Elizabeth Jordan
Barbara Keighton
Carol Ketchum
Nikita Khlystov
Maggie Kirk
Aspasia Knoerr
Barbara Kremen
Quentin Kubicek
Sheri Kuslak-Meyer
Laura Ladd
Tanecia Leathers
Emily Lehw
Nan Len
Ming Jiu Li
Betty Lindholm
Cheri Lindholm
Beatrice Litt
Barbara Lyon
Gay Mahanna
Rosalie Mandel

Coralynn Marshall
Betty Matthews
David McClay, Jr.
Margaret McCotter
Patricia McIndoo
Lula McKnight
Anne McNally
Austin Meredith
Horst Meyer
Sarah Meyer
Ann Milam
Dave Milkereit
Nell Mincey
David McClay, Jr.
Margaret Mobley
Kathleen Moore
Priscilla Morgan
Parker Morton
Alice Mumford
Elizabeth Mutran
Charlotte Newby
Rebecca Newton
Evelyn Nicholson
Sonja Nielsen
Shelly Nowik
Pam Odom
Kazu Okada
Lois Oliver
Denny O'Neal
Jimmy O'Neal
Elizabeth Ostrander
Shannon O'Toole
Pat Owen
Donna Owens
Emmy Patton
Maggie Payne
Barbara Peoples
Elise Perugini
Maureen Petersen
Jennifer Phillips
John Piva, Jr.
Suzanne Powers
Cheryl Prather
Jeff Prather
Mary Price
Sandy Pruitt
Kay Randolph
Betsy Raymond
Selde Reed
Joe Rees
Jean Reniers
Xavier Robinson
Theo Roddy
Millicent Rogers
Susan Rohde
Betty Rosch
Seth Rose
Judith Roth


Nell Rubidge
Mary Ann Ruegg
Olivia RuiZamora
Minako Sakurai
Cheryl Sanford
Peggy Sanford
Nan Schiebel
Debbi Schwartz
Heather Seifert
Judith Shapiro
Geraldine Sheehy
Courtney Shives, Jr.
Molly Simes
Fred Smith
Lisa Smith
Sara Smith
Wendy Smith
Sue Anne Solem
Diana Spock
Sondra Stein
Richard Stickney
Ann Stock
Jay Stolz
Boyd Strain
Ulana Stuart
Chizuko Sueyoshi
Maki Takahashi
Ann Taska
Teddy Taylor
Alice Thacher
Charles Twine
Keiko Uezu
Salome Wagner
Jenny Wainwright
Pu Wang
Chris Warren
Emily Waszak
Kaylynn Webb
Karen Webbink
Joyce Weiser
Thomas West
Fred Westbrook
Andy Wheeler
Richard White
Elizabeth Wilkins
Ray Wilkins
John Willard
Claire Williams
Ruby Wilson
Susan Wilson
Charles Witzleben
Marie Wood
Lyell Wright
John Wyman
Yoko Yamagishi
Bill Yarger
Dennis Yelle
Alice Zawadzki

OUR STAFF



1. **JAMIE ALLEN**
Gardening Assistant
 2. **STEFAN BLOODWORTH**
Curator, H.L. Blomquist Garden of Native Plants
 3. **JENNIFER COPELAND ***
Coordinator of Events
 4. **TERESA DARK**
Assistant Director of Development
 5. **JEFF HARWARD**
Assistant Horticulturist
 6. **CHUCK HEMRIC**
Director of Volunteers
 7. **JASON HOLMES**
Curator, Doris Duke Center Gardens
 8. **HARRY JENKINS**
Superintendent & Horticulturist
 9. **JAMES JENKINS**
Gardening Assistant
 10. **PAUL JONES**
Curator, W.L. Culberson Asiatic Arboretum
 11. **PAUL KARTCHESKE**
Associate Director, Administrative Operations
 12. **TAMARA KILBANE**
Horticulturist
 13. **BILL LEFEVRE**
Executive Director
 14. **JAN LITTLE**
Director of Education & Public Programs
 15. **KATHERINE MAGOWAN**
Horticulturist
 16. **ROBERT MOTTERN**
Director of Horticulture
 17. **ANNIE NASHOLD**
Director of Children's Education & Family Programs
 18. **MIKE OWENS**
Curator, Terraces & Historic Core
 19. **MICHAEL PATRICK**
Assistant Horticulturist
 20. **MICHELLE RAWLINS**
Horticulturist
 21. **LEOLA SMITH**
The Terrace Shop Manager
 22. **MILLICENT SNOW**
Development Assistant
 23. **KATIE STOUDEMIRE**
*Program Coordinator and Educator
Healing & Hope Through Science*
 24. **ORLA SWIFT**
Director of Marketing & Communications
 25. **JAN WATSON**
Horticulturist
- EVENT SUPERVISORS:**
Amanda Yohn
Thomas Williamson
Patrick Radack
Bijan Karkouki
Ali Karkouki
Nikki Karkouki
Christopher Kobe
Jonah Binstock
- SUMMER INTERNS:**
Heather Seifert
Tate Warren
Amanda Wilkins
- WORK-STUDY STUDENTS:**
Idaliz Baez
Alissa Burchell
Nnenna Ene
Kyle Hamilton
Kim Le
Simone Lewis
Carol Shih
Lauren Sims
Jonathan Weant
Mindy Vawdrey

*Through Nov. 2010.
New events coordinator: Marcia Julien.



the sarah p. duke gardens

board of advisors

Ellen C. Adams, Chair, *Hillsborough, NC*
Anne Micheaux Akwari, *Durham, NC*
Taimi T. Anderson, *Chapel Hill, NC*
Marcia A. Angle, *Durham, NC*
Mary Cahill Barron, Vice Chair, *Chapel Hill, NC*
John O. Blackburn, *Durham, NC*
Cynthia Brodhead, *Durham, NC*
Nancy H. Hamilton, *Durham, NC*
Alice K. Horton, *Durham, NC*
Christine J. Huber, *Durham, NC*
Susan W. Hudson, *Wilson, NC*
Laura S. Ladd, *Hillsborough, NC*
David R. McClay, Jr., *Durham, NC*
J. Horst Meyer, *Durham, NC*
Lois Pounds Oliver, *Durham, NC*
John J. Piva, Jr., *Durham, NC*
Jefferson B. Prather, *Chapel Hill, NC*
Mary W. Price, *Edina, MN*
Kay Bunting Randolph, *Pittsboro, NC*
Charles A. Reid, *Baltimore, MD*
Theo J. Roddy, *Durham, NC*
Joseph D. Rowand, *Hillsborough, NC*
A. Courtney Shives, Jr., *Greenville, SC*
Jean M. Stallard, *Osyka, MS*
Teddy J. Taylor, *Dallas, TX*
Thomas R. West, *Raleigh, NC*

Student Member

Bryndl Bartter, *Durham, NC*

Honorary Member

Mary D.B.T. Semans, *Durham, NC*

for more information
please visit:

gardens.duke.edu



Duke
UNIVERSITY

Sarah P. Duke Gardens creates and nurtures an environment in the heart of Duke University for learning, inspiration and enjoyment through excellence in horticulture.

SARAH P. DUKE GARDENS

gardens.duke.edu | Box 90341 | Durham, NC | 27708-0341